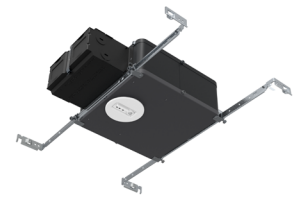


### SBA System Bridge Accessory

Wireless controller with connected sensor



**Interact System bridge accessory SBA** is a wireless controller with a connected integral occupancy and daylight sensor and supports wireless mesh connectivity. When configured without a gateway the device works via Bluetooth in a standalone mode, or in a networked mode if a compatible gateway is used.

SBA is sold as an accessory to connect any 0-10V or electronic low voltage luminaire with the Interact system. Also, ideal for downlights and linear systems where a string of luminaires can be controlled together with a maximum load of 730VA at 120V.

Project: \_\_\_\_\_  
 Location: \_\_\_\_\_  
 Cat.No: \_\_\_\_\_  
 Type: \_\_\_\_\_  
 Qty: \_\_\_\_\_  
 Notes: \_\_\_\_\_

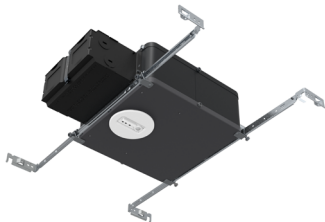
### Ordering guide

example: SBAZ10-CS-ER100-RS

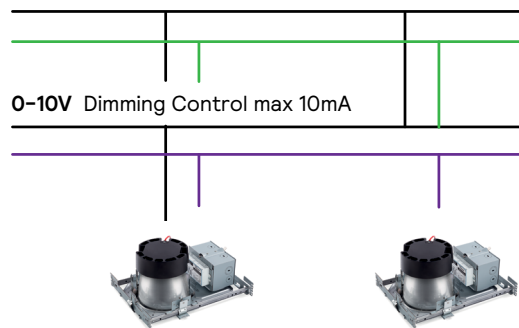
Series	Dimming	Sensor	Options
<b>SBA</b>	-	-	
<b>SBA</b> Interact Ready System Bridge	<b>Z10</b> 0-10V (120-347V) <b>ELV</b> Electronic Low Voltage	<b>CS</b> <sup>3</sup> Interact sensor <b>SB</b> <sup>3,4</sup> Interact advanced sensor bundle	<b>LC</b> Chicago Plenum <b>ER100</b> <sup>1,2</sup> UL924 Listed sensor bypass <b>RS</b> Remote sensor mounting

1. ER100 option is 120-277V with Z10 dimming
2. Consult factory for ER100 option with ELV dimming
3. Must order IRT9015 Interact commissioning remote with each system order
4. SB sensor only works in a gateway mode. Must order a compatible Interact gateway.

### SBA



Power Switched mains: max 730VA



# SBA System Bridge Accessory wireless controller

Interact compatible via Bluetooth or connected with gateway

## Specifications

### Frame features

- **Housing:** .026" galvanized steel. Airseal® housing minimizes air leakage to less than 2 CFM at 1.57PSF (or 75PA) in compliance with the International Energy Conservation Code, and Washington State Energy Code (Section 502.4).
- **Lower frame and top cover:** .026" galvanized steel. Maximum ceiling thickness of 1.5"(38mm). 3/8" (9.5mm) deep integral collar with four notches at 90° apart to simplify alignment.
- **Junction Box:** 2.5" X 5 3/8" X 2" (27 cu. in) .032" galvanized steel. UL listed 90° supply conductors. Rated for branch circuit wiring supplying connected luminaires (daisy chaining).
- **Mounting bars:** .059" galvanized steel. Bars pivot for easy attachment and wire-in below ceiling line, and extend to accommodate 16" (406mm) to 24" (610mm) O.C. joist spacing. Bars can accommodate 12" (305mm) O.C. joist spacing after a slight field modification. Features integral self tapping phillips/ square drive screws for secure attachment to wood or metal construction. Attaches to T-bar ceilings without the need of accessories. Bars installed on shortest dimension of frame, but can be easily repositioned 90° from original position.

\* Accessibility: requires top access.

### Component features

#### Emergency Options (ER100)

- **Power Sensing (Factory default):** Recommended UL924 option requires unswitched power sense line, absence of voltage on the normal circuit triggers luminaire to 100% output
- **Power Interruption Detection (Field option):** Detects AC power interruption >30ms triggers 90 minute emergency mode with luminaire at 100% output

#### ELV Controller

- Accommodates reverse phase dimmable (ELV) luminaires by converting from a 0-10v command signal. ETL/cETL listed.

#### Electrical

- SBAZ10 including LC option
  - Voltage: 120-347V
  - Frequency: 50/60HZ
  - Max Power: 730VA
- SBAELV including LC option
  - Voltage: 120V
  - Frequency: 60HZ
  - Max Power: 450VA

#### Environmental and Approbations

- Operating temperature: 0°C to 40°C
- Storage temperature: -25°C to 80°C
- Storage humidity: 0-95% non-condensing
- cULus listed to 1598 and 8750 for use in damp locations
- CCEA (with LC option)

#### Warranty

- 5 years
- Visit [genlyte.com/warranties](http://genlyte.com/warranties) for complete warranty information

## Control Options\*

### Interact radio node for Standalone, Gateway & Gateway + IoT tiers (RA)

- RA sensor option is a connected radio node supporting wireless mesh connectivity.
- Compatible with standalone and gateway modes of Interact.

### Interact occupancy & daylight sensor for Standalone, Gateway & Gateway + IoT tiers (CS)

- The CS sensor option is a connected sensor with built-in occupancy and daylight detection, along with wireless mesh connectivity.
- Compatible with standalone and gateway modes of Interact.

### Interact advanced sensor bundle for Gateway + IoT tier (SB)

- SB sensor option offers occupancy and daylight sensing and supports advanced IoT capabilities, such as desk-level temperature and humidity monitoring, noise classification, and Bluetooth Low Energy (BLE) beacon functionality.
- Setup requires a compatible gateway and internet connectivity.
- With compatible gateway and software analytics, SB sensor option enables greater building efficiency, seamless system integration, and optimized space utilization through occupancy and environmental insights.

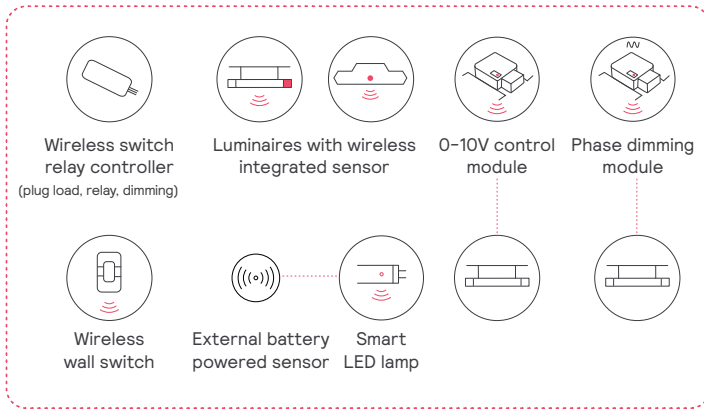
Interact for intelligent buildings sensor option codes across Genlyte product lines\*

	Sensor part #	Daybrite	Ledalite	Lightolier
Zigbee + Bluetooth	SC100B	RADIO	RA	RA
Zigbee + Bluetooth + Sensing	SC200B	SWZCS	CS	SBA or SWCS accessory
Zigbee + Bluetooth + Sensing + Environmental data	SC1500	IAOSB	SB	SBA or SWCS accessory
Zigbee + Highbay + Bluetooth + Sensing	SNH210 IA	SWZCSH	-	-

# SBA System Bridge Accessory wireless controller

Interact compatible via Bluetooth or connected with gateway

## Signify interact Easy. Effective. Smart.



### Meet Interact

A smart, wireless luminaire level lighting control system (LLLC). A complete solution that combines modern and intuitive technologies for easy installation and specification.

- Works with or without gateway
- **No** IT
- **No** light point restrictions
- **Up to 75%** out of the box savings
- **Fast & easy**
- **Code & rebates** compliant

### Capabilities

- Luminaire integrated occupancy and daylight sensing
- BMS integration
- Human-centric lighting
- Connectivity & insights
- Full Automation\*
- Security

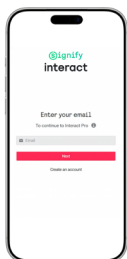
\*Grouping, zoning, dimming, high-end trimming, scenes, scheduling, manual controls

### Benefits

- Up to **80%** installation savings<sup>1</sup>  
Compared to installation costs of wired systems
- Up to **5 min** faster setup time<sup>2</sup>  
Compared to similar wireless systems
- Less than **2 year** payback  
Implement deep energy-saving strategies and claim utility rebates
- 1.8x** more energy savings  
Compared to conventional control systems
- Up to **2x** utility rebates  
Network Interact ready devices and get more utility rebates<sup>3</sup>

1. Versus legacy systems based on installer interviews
2. Based on installer analysis done by Signify for a typical multi-zone space
3. Utility programs across US

### Just lights and an App



1. Install the Interact ready fixtures with embedded smart sensor
2. Install the wireless wall switch
3. Configure your setup with the Interact App
4. Leverage the IRT9015 remote accessory to accelerate your setup process
5. Optionally add a gateway for insights and management

#### Learn more about Interact:

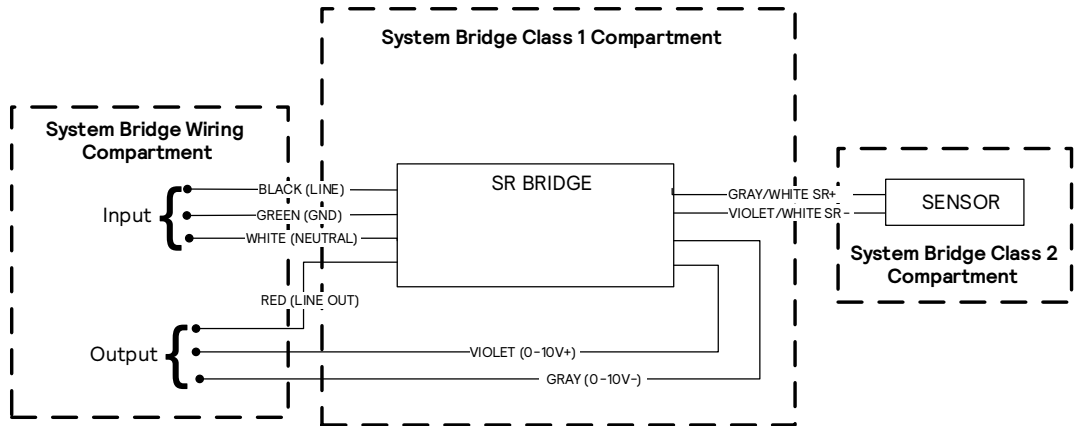
Interact includes an app, a web portal, and a comprehensive range of Interact ready wireless luminaires, lamps, retrofit kits, and control devices like switches and sensors that operate within the same system.



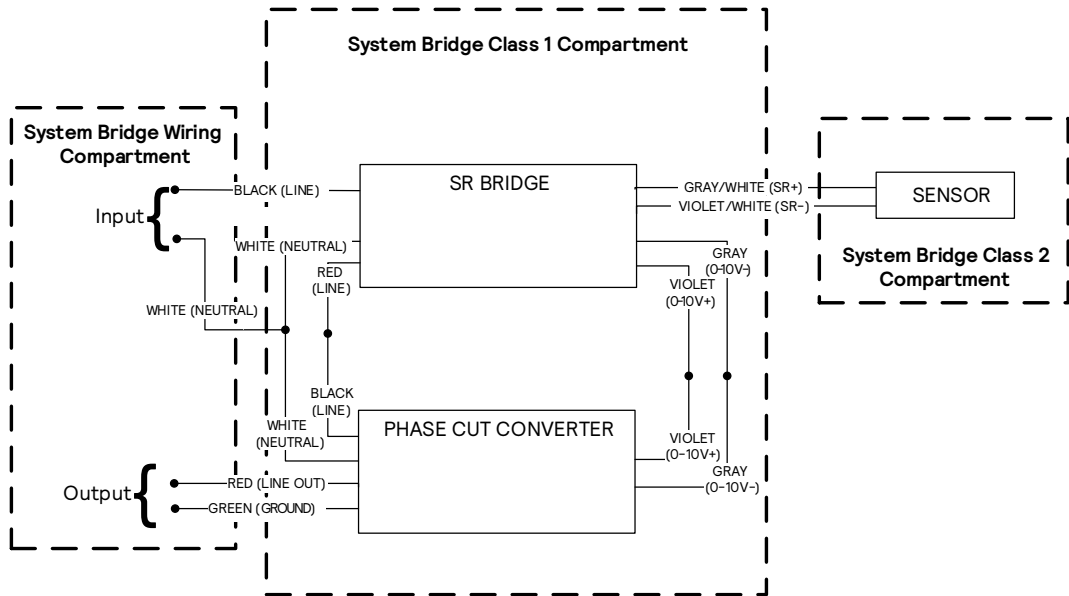
# SBA System Bridge Accessory wireless controller

Interact compatible via Bluetooth or connected with gateway

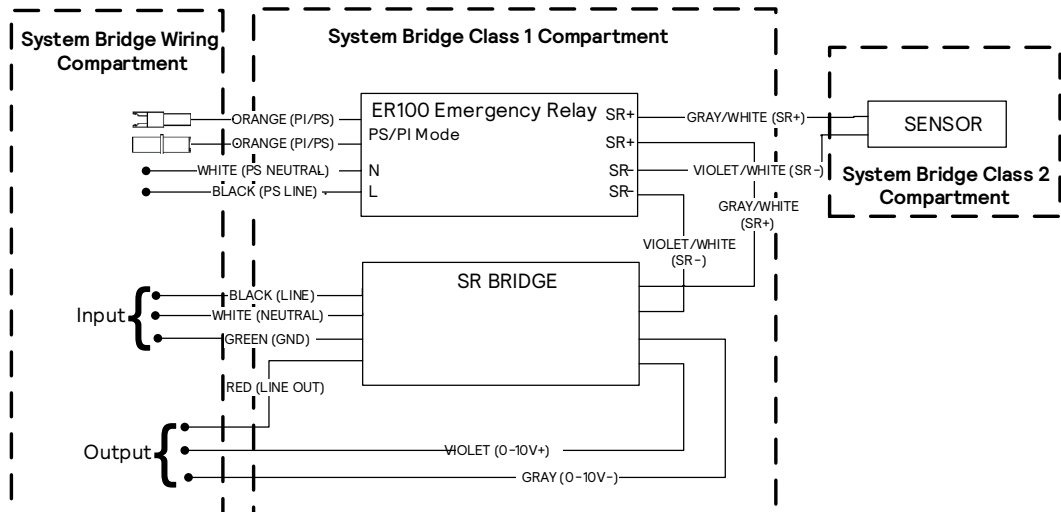
## SBAZ10



## SBAELV



## SBAZ10-ER



# SBA System Bridge Accessory wireless controller

Interact compatible via Bluetooth (like SpaceWise) or connected with gateway

## Dimensions

Internal sensor configurations

Remote sensor configurations (-RS)

