



Lumec's **Renaissance** Series mixes refinement together with ambition. The design reflects and evokes late 19th and early 20th century styling, perfectly suited for most urban and rural areas, while the state-of-the-art technology inside assures exceptional photometric performance, a long lifespan, and ease of maintenance.

Project: _____
 Location: _____
 Cat.No: _____
 Type: _____
 Lumens: _____ Qty: _____
 Notes: _____

Ordering guide

example: RS20-35W32LED4K-G3-ACDR-LE5-120-DMG-RC-PH8-BKTX

Series	LED module	CCT	Gen.	Optical system	Voltage	Driver	Adapters
RNS20			G3			DMG	
RNS20	24W16LED 30W16LED 35W32LED 55W32LED	2.2K ⁷ 2200 K 3K 3000 K 4K 4000 K	G3 Gen3	ACRD-LE2 Type II (ASYM) with acrylic globe ACRD-LE3 Type III (ASYM) with acrylic globe ACRD-LE4 Type IV (ASYM) with acrylic globe ACRD-LE52 Type IV (SSYM) with acrylic globe	UNV 120-277VAC 347 347VAC 480 480VAC	DMG 0-10V DALI Pre-set, compatible with the DALI control system SRD ¹ Sensor ready driver, standard configuration SRD1 ¹ Sensor ready driver, standard configuration	MA1 1/4" NPT threaded hole adapter accepting threaded tube MA2 1 1/2" NPT threaded hole adapter accepting threaded tube SMA Decorative retro side-mounted cast-aluminum, accepts tubes from 1 5/8" to 2 3/8" SMB Decorative contemporary sidemounted cast-aluminum, accepts tubes from 1 5/8" to 2 3/8"

Options						
Receptical	Control	Luminaire	Decorative	Poles/ Brackets	Finish	
RC ^{3,5} Receptacle for twist-lock photo cell or shorting cap, 3-pin RCD ^{3,5} Receptacle for twist-lock photo cell or shorting cap, 5-pin RCD7 ^{3,6} Receptacle for twist-lock photo cell or shorting cap, 7-pin	PH8 ⁴ Twist-lock Photoelectric Cell PH9 ⁴ Shorting cap PHXL ^{1,4} Twist-lock Photoelectric Cell, extended life, UNV (120-277VAC)	BAC ⁷ Meets the requirements of the Buy America Act of 1933 (BAA) BABAF ⁷ Meets the requirements of the Build America Buy America Act for projects funded through FHWA that are obligated before October 1, 2026, and meets the Buy America preferences for FTA HS House Side Shield SP2 20kV/10 kA Surge Protector	DE1 Decorative Deflector	Consult signify.com/ outdoorluminaires for details and the complete line of Signify poles and brackets.	BE2TX Textured midnight blue BE6TX Textured ocean blue BE8TX Textured royal blue BG2TX Textured Sandstone BKTX Textured black BRTX Textured bronze GN4TX Textured blue green GN6TX Textured forest green GN8TX Textured Dk forest green GNTX Textured green GR Gray sandtex GY3TX Textured medium grey NP Natural aluminum RD2TX Textured burgundy RD4TX Textured scarlet TG Hammertone gold WHTX Textured white	

- Not available 347-480 volt.
- Not available with HS option.
- Use of photoelectric cell or shorting cap is required to ensure proper illumination.
- Luminaire option RC, RCD or RCD7 is required with this options.
- SMA or SMB adaptors is required for this option.
- SMB adaptors is required for this option.
- Failure to properly select the "BAC" suffix could result in you receiving product that is not BAA compliant product with no recourse for an RMA or refund.
This BAC designation hereunder does not address (i) the applicability of, or availability of a waiver under, the Trade Agreements Act, or (ii) the "Buy America" domestic content requirements imposed on states, localities, and other non-federal entities as a condition of receiving funds administered by the Department of Transportation or other federal agencies. Genlyte's products with a BAC option code designation are manufactured in the US and utilize a BAA COTS exemption rule for compliance. "BABAF" designates the product will meet the standards set by FHWA for BABA and FTA for Buy America. As noted, for FHWA BABA compliance, applicable projects must be funded by October 1, 2026.
- Consult Signify to confirm whether specific accessories are BAA-compliant.



RNS20 Renaissance LED (small)

Urban Luminaire

Features

1. Constructed from top-quality materials, the Contemporary Lantern Series maintains excellent performance in even the most demanding environments.
2. Type LE2, LE3, LE4 and LE5 optic distributions are available to meet a range of lighting applications.
3. Acrylic globe has satin-finish to gently obscure the source without compromising photometry.
4. Tool free access to lamp and electrical components for ease of maintenance.
5. Unique styling merges traditional and contemporary design.

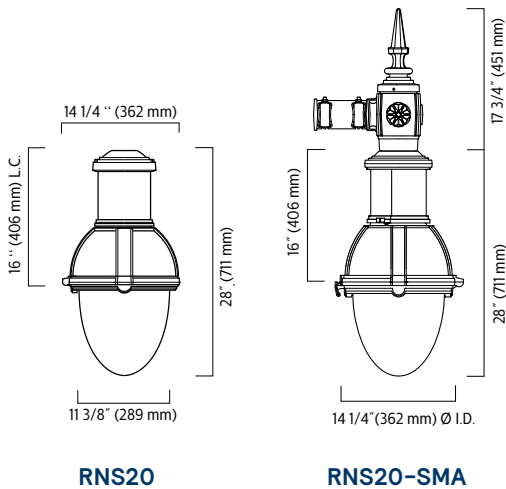
Dimensions

EPA: 1.43 ft² max.

ACDR Weight: 37 lbs (16.8kg) max.

GL Weight: 66 lbs (20.9kg) max.

EPA and weight are calculated without adapter



RNS20

RNS20-SMA

Predicted Lumen Depreciation Data

Predicted performance derived from LED manufacturer's data and engineering design estimates, based on IESNA LM-80 methodology. Actual experience may vary due to field application conditions. L70 is the predicted time when LED performance depreciates to 70% of initial lumen output. Calculated per IESNA TM21-11. Published L70 hours limited to 6 times actual LED test hours.

Ambient Temperature °C	Driver mA	Calculated L ₇₀ Hours	L ₇₀ per TM-21	Lumen Maintenance % at 60,000 hrs
35°C	800 mA	>99,000 hours	>60,000 hours	>83%

RNS20 Renaissance LED (small)

Urban Luminaire

LED light engine technical information for RNS20

LED = Lumileds Luxeon T, CRI = 70, CCT = 4000K (3985K +/- 275K or 3710K to 4260K)

System (LED + driver) rated life = 100,000 hrs¹

Ordering Code:	Total LEDs	System current (mA)	CCTs	Average System Watts (W)	LE2A			LE3A			LE4A			LE5A		
					Lumen Output	BUG Rating	Efficacy (LPW)	Lumen Output	BUG Rating	Efficacy (LPW)	Lumen Output	BUG Rating	Efficacy (LPW)	Lumen Output	BUG Rating	Efficacy (LPW)
24W16LED3K-G3-x	16	530	3000	28	3651	B1-U3-G1	130	3618	B1-U2-G1	129	3629	B1-U2-G2	130	3630	B2-U2-G2	130
30W16LED3K-G3-x	16	700	3000	37	4593	B1-U3-G1	124	4552	B1-U3-G2	123	4566	B1-U3-G2	123	4567	B3-U3-G3	123
35W32LED3K-G3-x	32	350	3000	36	5087	B1-U3-G1	141	5041	B1-U3-G2	140	5056	B1-U3-G2	140	5058	B3-U3-G3	141
55W32LED3K-G3-x	32	530	3000	54	7139	B1-U3-G2	133	7074	B1-U3-G2	132	7096	B1-U3-G3	133	7098	B3-U3-G3	133
24W16LED4K-G3-x	16	530	4000	28	4016	B1-U3-G1	143	3979	B1-U3-G2	142	3992	B1-U3-G2	143	3993	B3-U3-G3	143
30W16LED4K-G3-x	16	700	4000	37	5053	B1-U3-G1	137	5007	B1-U3-G2	135	5022	B1-U3-G2	136	5024	B3-U3-G3	136
35W32LED4K-G3-x	32	350	4000	36	5596	B1-U3-G2	155	5545	B1-U3-G2	154	5562	B1-U3-G2	155	5564	B3-U3-G3	155
55W32LED4K-G3-x	32	530	4000	54	7853	B2-U3-G2	147	7781	B1-U3-G2	145	7806	B1-U3-G3	146	7808	B3-U3-G3	146

1. L70 = 70,000 hrs (at ambient temperature = 25°C)
2. System wattage includes the lamp and the LED driver

3. These guidelines show typical replacements for the HID wattage ranges shown. Replacements should always be confirmed with a photometric layout.

Note : Due to rapid and continuous advances in LED technology, LED luminaire data is subject to change without notice and at the discretion of Signify.

RNS20 Renaissance LED (small)

Urban Luminaire

Specifications:

Hood

Cast 356 aluminum dome, mechanically assembled on the luminaire, c/w a watertight grommet, mechanically assembled to the bracket with four bolts 3/8 16 UNC. This suspension system permits for a full rotation of the luminaire in 90 degree increments.

Housing

In a round shape, this housing is made of injection die cast A380 aluminum, complete with a weatherproof door giving a tool free access to the ballast, mechanically assembled. This suspension system permits for a full rotation of the luminaire in 90 degree increments.

YM version: In a round shape, this housing is made of die cast A380 aluminum, welded to the yoke.

Access-mechanism

A gravity die cast 356 aluminum frame with latch and hinge. The mechanism shall offer tool free access to the inside of the luminaire. An embedded memory retentive gasket shall ensure weatherproofing.

Globe

LEx: Made of one-piece seamless injection-molded (ACDR) DR acrylic having an inner prismatic surface. Complete with a semi-prismatic house side shield and external glare softening prisms. The globe is mechanically assembled and sealed onto the lower part of the heat sink.

Light engine

LED engine composed of 4 main components: **Heat sink / LED module / Optical system / Driver**

Electrical components are RoHS compliant.

Heat sink

Made of cast aluminum optimising the LEDs efficiency and life. Product does not use any cooling device with moving parts (only passive cooling device)

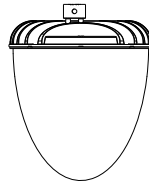
LED engine

LED type Lumileds LUXEON T. Composed of high-performance white LEDs. Color temperature as per ANSI/NEMA bin Neutral White, 3000 Kelvin nominal (3045K +/- 175K) or 4000 Kelvin nominal (3985K +/- 275K), CRI 70 Min. 75 Typical.

Optical system

LE2 (type II asymmetrical), LE3 (type III asymmetrical), LE4 (type IV asymmetrical) or LE5 (type V symmetrical) light distributions. Composed of high performance optical grade PMMA acrylic refractor lenses to achieve desired distribution optimized to get maximum spacing, target lumens and a superior lighting uniformity. Optical system is rated IP66. Performance shall be tested per LM 63, LM 79 and TM 15 (IESNA) certifying its photometric performance. Street side indicated.

Prismatic globe: IP66 rated optical system, composed of individual pre-oriented lens to achieve desired distribution, assembled with globe having an inner prismatic surface permanently sealed onto the lower part of the heat sink.



LE2 - Type II (asymmetrical)

LE3 - Type III (asymmetrical)

LE4 - Type IV (asymmetrical)

LE5 - Type V (symmetrical)

Driver

High power factor of 90% minimum. Electronic driver, operating range 50/60 Hz. Auto-adjusting universal voltage input from 120 to 277 VAC rated for both application line to line or line to neutral, Class I, THD of 20% max. Maximum ambient operating temperature from -40F(-40C) to 130F(55C) degrees. Driver comes with dimming compatible 0-10 volts.

The current supplying the LEDs will be reduced by the driver if the driver experiences internal overheating as a protection to the LEDs and the electrical components. Output is protected from short circuits, voltage overload and current overload. Automatic recovery after correction. Standard built-in driver surge protection of 2.5kV (min).

Surge Protector

Surge protector tested in accordance with ANSI/IEEE C62.45 per ANSI/IEEE C62.41.2 Scenario I Category C High Exposure 10kV/10kA waveforms for Line Ground, Line Neutral and Neutral Ground, and in accordance with U.S. DOE (Department of Energy) MSSLC (Municipal Solid State Street Lighting Consortium) model specification for LED roadway luminaires electrical immunity requirements for High Test Level 10kV / 10kA.

Driver options

DALI: Pre-set driver compatible with the DALI control system.

DMG: Dimmable driver 0-10V.

SRD: Sensor Ready Driver including SR communication (used for dimming and other functionalities), 24V auxiliary supply and a logical signal input (LSI) connected to the top NEMA twist lock receptacle.

SRD1: Sensor Ready Driver including SR communication (used for dimming and other functionalities) but with 24V auxiliary supply and a logical signal input (LSI) not connected to the top NEMA twist lock.

RNS20 Renaissance LED (small)

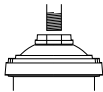
Urban Luminaire

Specifications (continued)

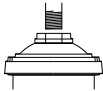
Luminaire adaptor

SMB: The luminaire is suspended by means of a decorative side-mounted cast aluminum adaptor. This adaptor accepts tubes from 1½" to 2¾" (41 to 60 mm) and is adjustable to more or less 5°.

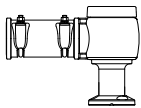
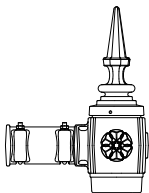
MA1: The luminaire is suspended by means of a mounting adaptor with a 1½" (32mm) NPT threaded hole accepting a threaded tube from the mounting. Retrofit adaptor for existing mounting



MA2: 1½" (38mm) NPT threaded hole accepting threaded tube from the mounting. Retrofit adaptor for existing mounting.

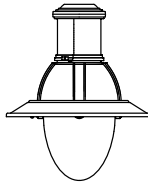


SMA: The luminaire is suspended by means of a decorative side-mounted cast aluminum adaptor. This adaptor accepts tubes from 1½" to 2¾" (41 to 60 mm) and is adjustable to more or less 5°. The adaptor features a cast aluminum decorative cover and finial.



Luminaire options

DE1: Decorative deflector



HS: House side shield

RC: Receptacle 3 pins



RCD: Receptacle 5 pins



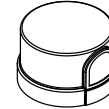
RCD7: Receptacle 7 pins



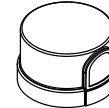
SP2: Integral surge protector

Luminaire accessories

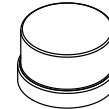
PH8: Photoelectric Cell, Twist-lock Type complete with receptacle. Allows a 90 degree rotation.



PHXL: Extended life photoelectric cell, Twist-lock Type complete with receptacle. Allows a 90 degree rotation.



PH9: Shorting cap, Twist-lock Type complete with receptacle.



RNS20 Renaissance LED (small)

Urban Luminaire

Specifications (continued)

Finish

The Thermosetting powder coating provided meets the color requirements of the AAMA 2604 specification as measured per ASTM D2244. The Thermosetting product is applied at a dry film of 2.5 to 4.0 mils (64-102 microns) on textured finishes, resulting in a durable long lasting finish.

Finish Options Include:

BE2TX: Textured Midnight Blue
BE6TX: Textured Ocean Blue
BE8TX: Textured Royal Blue
BG2TX: Textured Sandstone
BKTX: Textured Black
BRTX: Textured Bronze
GN4TX: Textured Blue Green
GN6TX: Textured Forest Green
GN8TX: Textured Dark Forest Green
GNTX: Textured Green
GR: Gray Sandtex
GY3TX: Textured Medium Grey
NP: Natural Aluminum
RD2TX: Textured Burgundy
RD4TX: Textured Scarlet
TG: Hammer-tone Gold
WHTX: Textured White

Wiring

Gauge (#14) TEW/AWM 1015 or 1230 wires, 6" (152mm) minimum exceeding from luminaire.

Hardware

All exposed screws shall be complete with Ceramic primer-seal base coat to reduce seizing of the parts and offers a high resistance to corrosion. All seals and sealing devices are made and/or lined with EPDM and/or silicone and/or rubber.

LED products (manufacturing standard)

The electronic components sensitive to electrostatic discharge (ESD) such as light emitting diodes (LEDs) are assembled in compliance with IEC61340 5 1 and ANSI/ESD S20.20 standards so as to eliminate ESD events that could decrease the useful life of the product.

Quality control

Manufactured to ISO 9001 2015 standards and ISO 14001-2015 International Quality Standards Certification.

Vibration resistance

Meets the ANSI C136.31, American National Standard for Roadway Luminaire Vibration specifications for Bridge/overpass applications. (Tested for 1.5G over 100 000 cycles)

Certifications and Compliance

cULus Listed for Canada and USA. Luminaires are DesignLights Consortium qualified.