



LumeC OmniScope LED post top is the latest solution for high-performance lighting in any urban setting. With contemporary, transitional and historical style options, as well as a selection of roofs, cages and fitters, this luminaire is versatile and adaptable to any environment. It features a precision and comfort light engine, which provides exceptional efficacy and glare control, ensuring comfortable and efficient illumination.

Project: _____
 Location: _____
 Cat.No: _____
 Type: _____
 Qty: _____
 Notes: _____

Ordering guide

example: S-OSPCCC-80W40LED-730-G1-2F-UNV-DMG-TLRD7-PH8S-BKTX

Series			LED module	CRI CCT	Gen.	Optical System	Voltage	Driver
Roof	Cage	Fitter						
S-OSPC OmniScope LED post top luminaire with Contemporary luminaire Roof S-OSPT OmniScope LED post top luminaire with Transitional Roof S-OSPH OmniScope LED post top luminaire with Historical Roof	C Contemporary T Transitional H Historical	C Contemporary T Transitional H Historical	15W40LED ^{1,2} 2,000 lumen	722 ¹¹ 70CRI, 2200K	G1 Gen1	Without Flat Lens 2 Type II (ASYM) 2B Type II (ASYM) enhanced backlight 3 Type III (ASYM) 3W Type III (ASYM) Wide 4 Type IV (ASYM) 5 Type (SYMM) With Flat Lens 2F Type II (ASYM) 2BF Type II (ASYM) 3F Type III (ASYM) 3WF Type III (ASYM) Wide 4F Type IV (ASYM) 5F Type V (SYMM)	UNV 120-277V HVU 347-480V HVX 277-480V	ZD4i⁸ Zhaga-D4i certified fixture D4id D4i certified DALI driver DMG¹² 0-10V
			20W40LED ^{1,2} 3,000 lumen	727 ¹¹ 70CRI, 2700K				
			30W40LED ² 4,000 lumen	730 70CRI, 3000K				
			35W40LED ² 5,000 lumen	740 70CRI, 4000K				
			45W40LED ³ 6,000 lumen	827 ¹¹ 80CRI, 2700K				
			65W40LED ³ 8,000 lumen	830 80CRI, 3000K				
			80W40LED 10,000 lumen	840 80CRI, 4000K				
			90W40LED 11,000 lumen					
			105W40LED 13,000 lumen					
			120W40LED ⁴ 14,000 lumen					
140W40LED ^{4,5,6} 16,000 lumen								

Options								
Receptacle	Control	Luminaire	Deco.	Finish				
TLRD7⁹ 7-Pin receptacle for photoelectric cell	Photoelectric Cell (add "S" for S-OSPC)⁷ PH8 (PH8S) Twist-lock UNV (120-277VAC) PH8/347 (PH8/347S) Twist-lock (347VAC) PH8/480 (PH8/480S) Twist-lock (480VAC) PH9 (PH9S) Shorting Cap PHXL (PHXLS) Extended life UNV (120-277VAC)	BAC¹⁴ Meets the requirements of the Buy American Act of 1933 (BAA) BABAF¹⁴ Meets the requirements of the Build America Buy America Act for projects funded through FHWA that are obligated before October 1, 2026, and meets the Buy America preferences for FTA FAWS^{1,15} Field adj. wattage selector HS¹³ House Side Shield SP2 20kV / 10kA Surge Protector TN3 Fitter to fit over a 3" (76 mm) O.D. by 4" (102 mm) long tenon TN3.5 Fitter to fit over a 3 1/2" (89 mm) O.D. by 4" (102 mm) long tenon	Deco. Finials¹⁶ FN1 FN2 FN3 FN4 FN5 FN6 FN7 FN8 FN9 FN10 FN11 Deco. Skirt	Textured Finishes BE2TX Midnight Blue GN6TX Forest Green BE6TX Ocean Blue GN8TX Dark Forest Green BE8TX Royal Blue GNTX Green BG2TX Sandstone Gold GY3TX Medium Grey BKTX Black RD2TX Burgundy BRTX Bronze RD4TX Scarlet GN4TX Blue Green WHTX White				
					TLRSR¹⁰ SR receptacle	OMS⁵ Outdoor Multi-Sensor Motion Sensor¹¹³ IR10 Dim 10% IR20 Dim 20% IR30 Dim 30% IR50 Dim 50%	S	GR Gray Sandtex NP Natural Alum TG Hammer-tone Gold TS Hammer-tone Silver

See page 2 for footnotes

S-OSP OmniScape

LED Urban Post Top with LEDgine technology

1. Only available with DMG Driver options.
2. Only available with UNV Voltage option.
3. Not available with D4i/DALI/SR Driver combined with HVX Voltage option.
4. D4i/DALI/SR Driver option only available with UNV Voltage option.
5. Not available with HS Luminaire option.
6. Not available with S-OSPT or S-OSPH Roof combined with Optical system with lens.
7. TLRD7 must be selected for this option. If used, photoelectric cell selection must be compatible with selected Voltage option. When selecting S-OSPC roof, IP66 photoelectric cell or shorting cap must be used to preserve IP66 rating of luminaire.

8. TLRSR must be selected this option.
9. Use of photoelectric cell or shorting cap is required to ensure proper illumination.
10. Not available with DALI/DMG Driver options.
11. Longer lead time applies. Consult factory.
12. Not available in HVX Voltage option.
13. Only available with Optical system without lens. Recommended maximum mounting height 20ft (6m).
14. Failure to properly select the "BAC" suffix could result in you receiving product that is not BAA compliant product with no recourse for an RMA or refund. This BAC designation hereunder does not address (i) the applicability of, or availability of, a waiver under, the Trade Agreements Act, or (ii) the "Buy America" domestic

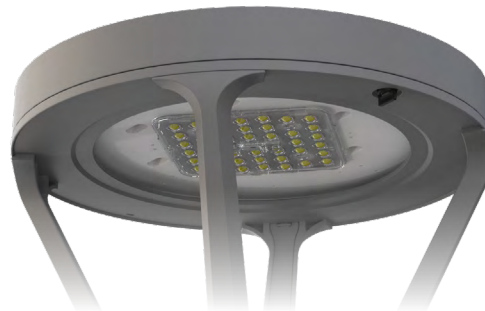
content requirements imposed on states, localities, and other non-federal entities as a condition of receiving funds administered by the Department of Transportation or other federal agencies. Genlyte's products with a BAC option code designation are manufactured in the US and utilize a BAA COTS exemption rule for compliance. "BABAF" designates the product will meet the standards set by FHWA for BABA and FTA for Buy America. As noted, for FHWA BABA compliance, applicable projects must be funded by October 1, 2026.

15. Not available with TLRD7 Receptacle option.
16. Finials (FNx) Decorative options are not available with S-OSPC Roof.

Predicted Lumen Depreciation Data

Derived from LED manufacturer's data and engineering design estimates, based on IESNA LM-80 methodology. Actual experience may vary due to field application conditions. L70 is the predicted time when LED performance depreciates to 70% of initial lumen output. Calculated per IESNA TM21-21.

Ambient Temperature	Driver mA	Calculated L70 hours	L70 per TM-21	Lumen Maintenance % @ 60,000 hrs
25°C	800 mA	181,000	>84,000 hrs	95.56%



Field Adjustable Wattage (FAWS) Multiplier Chart

15W40LED to 45W40LED

FAWS Position	Typical Delivered Lumens Multiplier	Typical System wattage
1	0.229	0.221
2	0.398	0.394
3	0.467	0.464
4	0.528	0.528
5	0.598	0.597
6	0.643	0.643
7	0.695	0.697
8	0.729	0.731
9	0.766	0.769
10	1.000	1.000

Note: Typical value accuracy +/- 5%

65W40LED to 120W40LED

FAWS Position	Typical Delivered Lumens Multiplier	Typical System wattage
1	0.273	0.286
2	0.487	0.515
3	0.574	0.605
4	0.695	0.725
5	0.741	0.771
6	0.812	0.803
7	0.878	0.834
8	0.924	0.933
9	0.980	0.982
10	1.000	1.000

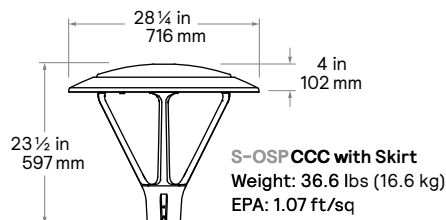
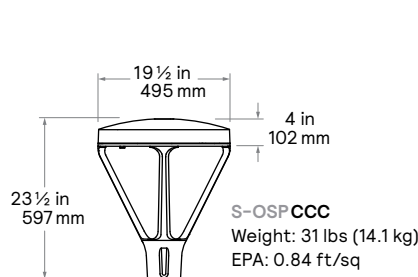
Note: Typical value accuracy +/- 5%

140W40LED

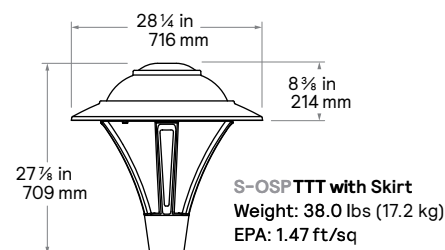
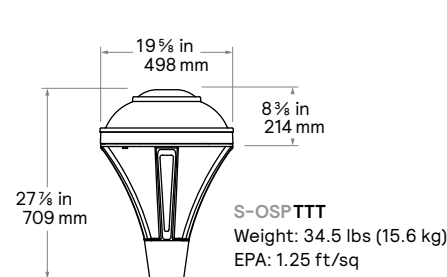
FAWS Position	Typical Delivered Lumens Multiplier	Typical System wattage
1	0.140	0.150
2	0.270	0.288
3	0.337	0.359
4	0.440	0.465
5	0.497	0.522
6	0.561	0.586
7	0.617	0.642
8	0.676	0.698
9	0.723	0.743
10	1.000	1.000

Note: Typical value accuracy +/- 5%

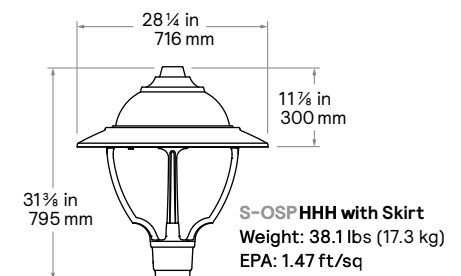
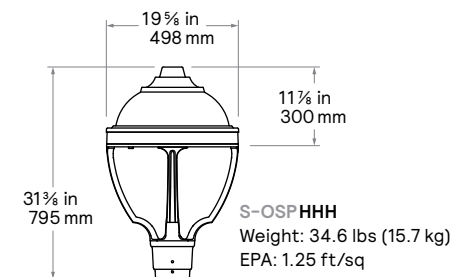
Contemporary dimensions



Transitional dimensions



Historical dimensions



S-OSP OmniScape

LED Urban Post Top with LEDgine technology

Without Flat Lens: 40 LED qty, Standard Performance Lumen Values

Ordering Code	System Current (mA)	Avg. System Watts (W)	Type 2			Type 2			Type 3			Type 3W			Type 4			Type 5		
			Lumen Output	BUG Rating	Effic. (LPW)	Lumen Output	BUG Rating	Effic. (LPW)	Lumen Output	BUG Rating	Effic. (LPW)	Lumen Output	BUG Rating	Effic. (LPW)	Lumen Output	BUG Rating	Effic. (LPW)	Lumen Output	BUG Rating	Effic. (LPW)
2700K / 70CRI, multiply 4000K values by 0.769 for 2200K																				
15W40LED-727-G1	240	14.3	2056	B1-U0-G1	143.4	2115	B1-U0-G1	147.5	2070	B1-U0-G1	144.3	2090	B1-U0-G1	145.7	2051	B0-U0-G1	143.0	2135	B2-U0-G1	148.9
20W40LED-727-G1	320	19.1	2731	B1-U0-G1	142.8	2809	B1-U0-G1	146.8	2749	B1-U0-G1	143.7	2775	B1-U0-G1	145.1	2725	B1-U0-G1	142.4	2835	B2-U0-G1	148.2
30W40LED-727-G1	440	26.8	3693	B1-U0-G1	138.0	3798	B1-U0-G1	141.9	3717	B1-U0-G1	138.9	3752	B1-U0-G1	140.2	3683	B1-U0-G1	137.6	3833	B3-U0-G1	143.2
35W40LED-727-G1	560	34.1	4665	B1-U0-G1	136.8	4798	B1-U0-G1	140.7	4696	B1-U0-G1	137.7	4741	B1-U0-G1	139.0	4654	B1-U0-G1	136.4	4843	B3-U0-G1	142.0
45W40LED-727-G1	712	43.7	5878	B2-U0-G2	134.6	6045	B2-U0-G2	138.5	5916	B1-U0-G1	135.5	5973	B2-U0-G2	136.8	5863	B1-U0-G2	134.3	6101	B3-U0-G2	139.7
65W40LED-727-G1	980	63.2	7924	B2-U0-G2	125.4	8150	B2-U0-G2	129.0	7976	B2-U0-G2	126.2	8052	B2-U0-G2	127.4	7904	B1-U0-G2	125.1	8226	B3-U0-G2	130.2
80W40LED-727-G1	1230	79.0	9722	B3-U0-G3	123.1	9999	B2-U0-G2	126.6	9786	B2-U0-G2	123.9	9879	B2-U0-G2	125.0	9698	B1-U0-G2	122.8	10092	B4-U0-G2	127.7
90W40LED-727-G1	1380	89.0	10915	B3-U0-G3	122.6	11226	B3-U0-G3	126.1	10987	B2-U0-G2	123.5	11091	B2-U0-G2	124.6	10888	B2-U0-G2	122.3	11331	B4-U0-G2	127.3
105W40LED-727-G1	1588	103.0	12306	B3-U0-G3	119.5	12657	B3-U0-G3	122.9	12388	B2-U0-G2	120.3	12505	B3-U0-G3	121.4	12276	B1-U0-G2	119.2	12775	B4-U0-G2	124.0
120W40LED-727-G1	1800	118.0	13702	B3-U0-G3	116.1	14093	B3-U0-G3	119.4	13793	B3-U0-G3	116.9	13923	B3-U0-G3	118.0	13668	B2-U0-G2	115.8	14224	B4-U0-G3	120.5
140W40LED-727-G1	2100	136.0	15664	B3-U0-G3	115.2	16110	B3-U0-G3	118.5	15768	B3-U0-G3	115.9	15917	B3-U0-G3	117.0	15626	B2-U0-G3	114.9	16261	B4-U0-G3	119.6
3000K / 70CRI																				
15W40LED-730-G1	240	14.3	2243	B1-U0-G1	156.4	2307	B1-U0-G1	160.9	2258	B1-U0-G1	157.5	2279	B1-U0-G1	159.0	2238	B0-U0-G1	156.0	2329	B2-U0-G1	162.4
20W40LED-730-G1	320	19.1	2980	B1-U0-G1	155.8	3064	B1-U0-G1	160.2	2999	B1-U0-G1	156.8	3028	B1-U0-G1	158.3	2972	B1-U0-G1	155.4	3093	B2-U0-G1	161.7
30W40LED-730-G1	440	26.8	4028	B1-U0-G1	150.5	4143	B1-U0-G1	154.8	4055	B1-U0-G1	151.5	4093	B1-U0-G1	153.0	4018	B1-U0-G1	150.2	4182	B3-U0-G1	156.3
35W40LED-730-G1	560	34.1	5089	B2-U0-G2	149.2	5234	B1-U0-G1	153.5	5123	B1-U0-G1	150.2	5172	B1-U0-G1	151.6	5077	B1-U0-G2	148.8	5283	B3-U0-G1	154.9
45W40LED-730-G1	712	43.7	6412	B2-U0-G2	146.9	6595	B2-U0-G2	151.0	6454	B2-U0-G2	147.8	6515	B2-U0-G2	149.2	6396	B1-U0-G2	146.5	6656	B3-U0-G2	152.5
65W40LED-730-G1	980	63.2	8644	B2-U0-G2	136.8	8891	B2-U0-G2	140.7	8701	B2-U0-G2	137.7	8784	B2-U0-G2	139.0	8623	B1-U0-G2	136.4	8974	B4-U0-G2	142.0
80W40LED-730-G1	1230	79.0	10606	B3-U0-G3	134.2	10908	B3-U0-G3	138.1	10676	B2-U0-G2	135.1	10777	B2-U0-G2	136.4	10579	B1-U0-G2	133.9	11010	B4-U0-G2	139.4
90W40LED-730-G1	1380	89.0	11907	B3-U0-G3	133.8	12247	B3-U0-G3	137.6	11986	B2-U0-G2	134.7	12100	B3-U0-G3	136.0	11878	B2-U0-G2	133.5	12361	B4-U0-G2	138.9
105W40LED-730-G1	1588	103.0	13425	B3-U0-G3	130.3	13808	B3-U0-G3	134.1	13514	B3-U0-G3	131.2	13642	B3-U0-G3	132.4	13392	B2-U0-G2	130.0	13936	B4-U0-G3	135.3
120W40LED-730-G1	1800	118.0	14948	B3-U0-G3	126.7	15374	B3-U0-G3	130.3	15047	B3-U0-G3	127.5	15189	B3-U0-G3	128.7	14911	B2-U0-G3	126.4	15517	B4-U0-G3	131.5
140W40LED-730-G1	2100	136.0	17088	B3-U0-G3	125.6	17575	B3-U0-G3	129.2	17201	B3-U0-G3	126.5	17364	B3-U0-G3	127.7	17046	B2-U0-G3	125.3	17739	B5-U0-G3	130.4
4000K / 70CRI																				
15W40LED-740-G1	240	14.3	2337	B1-U0-G1	162.9	2403	B1-U0-G1	167.6	2352	B1-U0-G1	164.0	2374	B1-U0-G1	165.6	2331	B0-U0-G1	162.5	2426	B2-U0-G1	169.1
20W40LED-740-G1	320	19.1	3104	B1-U0-G1	162.2	3192	B1-U0-G1	166.9	3124	B1-U0-G1	163.3	3154	B1-U0-G1	164.9	3096	B1-U0-G1	161.8	3222	B2-U0-G1	168.4
30W40LED-740-G1	440	26.8	4196	B1-U0-G1	156.8	4316	B1-U0-G1	161.3	4224	B1-U0-G1	157.8	4264	B1-U0-G1	159.3	4186	B1-U0-G1	156.4	4356	B3-U0-G1	162.8
35W40LED-740-G1	560	34.1	5301	B2-U0-G2	155.4	5453	B2-U0-G2	159.9	5337	B1-U0-G1	156.4	5387	B1-U0-G1	157.9	5288	B1-U0-G2	155.0	5503	B3-U0-G1	161.3
45W40LED-740-G1	712	43.7	6679	B2-U0-G2	153.0	6869	B2-U0-G2	157.3	6723	B2-U0-G2	154.0	6787	B2-U0-G2	155.4	6663	B1-U0-G2	152.6	6933	B3-U0-G2	158.8
65W40LED-740-G1	980	63.2	9004	B2-U0-G2	142.5	9261	B2-U0-G2	146.5	9064	B2-U0-G2	143.4	9150	B2-U0-G2	144.8	8982	B1-U0-G2	142.1	9348	B4-U0-G2	147.9
80W40LED-740-G1	1230	79.0	11047	B3-U0-G3	139.8	11362	B3-U0-G3	143.8	11120	B2-U0-G2	140.8	11226	B2-U0-G2	142.1	11020	B2-U0-G2	139.5	11468	B4-U0-G2	145.2
90W40LED-740-G1	1380	89.0	12404	B3-U0-G3	139.4	12757	B3-U0-G3	143.3	12486	B2-U0-G2	140.3	12604	B3-U0-G3	141.6	12373	B2-U0-G2	139.0	12876	B4-U0-G2	144.7
105W40LED-740-G1	1588	103.0	13984	B3-U0-G3	135.8	14383	B3-U0-G3	139.6	14077	B3-U0-G3	136.7	14210	B3-U0-G3	138.0	13950	B2-U0-G3	135.4	14517	B4-U0-G3	140.9
120W40LED-740-G1	1800	118.0	15571	B3-U0-G3	132.0	16014	B3-U0-G3	135.7	15674	B3-U0-G3	132.8	15822	B3-U0-G3	134.1	15532	B2-U0-G3	131.6	16164	B4-U0-G3	137.0
140W40LED-740-G1	2100	136.0	17800	B3-U0-G3	130.9	18307	B3-U0-G3	134.6	17918	B3-U0-G3	131.7	18088	B3-U0-G3	133.0	17756	B2-U0-G3	130.6	18478	B5-U0-G3	135.9
2700K / 80CRI																				
15W40LED-827-G1	240	14.3	1925	B1-U0-G1	134.3	1980	B1-U0-G1	138.1	1938	B1-U0-G1	135.2	1957	B1-U0-G1	136.4	1921	B0-U0-G1	133.9	1999	B2-U0-G1	139.4
20W40LED-827-G1	320	19.1	2557	B1-U0-G1	133.7	2630	B1-U0-G1	137.5	2574	B1-U0-G1	134.6	2599	B1-U0-G1	135.8	2551	B1-U0-G1	133.4	2655	B2-U0-G1	138.8
30W40LED-827-G1	440	26.8	3458	B1-U0-G1	129.2	3556	B1-U0-G1	132.9	3480	B1-U0-G1	130.1	3513	B1-U0-G1	131.3	3449	B1-U0-G1	128.9	3589	B3-U0-G1	134.1
35W40LED-827-G1	560	34.1	4368	B1-U0-G1	128.1	4493	B1-U0-G1	131.7	4397	B1-U0-G1	128.9	4439	B1-U0-G1	130.1	4358	B1-U0-G1	127.8	4535	B3-U0-G1	132.9
45W40LED-827-G1	712	43.7	5504	B2-U0-G2	126.1	5660	B2-U0-G2	129.6	5540	B1-U0-G1	126.9	5592	B2-U0-G2	128.1	5490	B1-U0-G2	125.7	5713	B3-U0-G1	130.9
65W40LED-827-G1	980	63.2	7420	B2-U0-G2	117.4	7631	B2-U0-G2	120.7	7469	B2-U0-G2	118.2	7540	B2-U0-G2	119.3	7401	B1-U0-G2	117.1	7702	B3-U0-G2	121.9
80W40LED-827-G1	1230	79.0	9103	B2-U0-G2	115.2	9362	B2-U0-G2	118.5	9163	B2-U0-G2	116.0	9250	B2-U0-G2	117.1	9081	B1-U0-G2	114.9	9450	B4-U0-G2	119.6
90W40LED-827-G1	1380	89.0	10221	B3-U0-G3	114.8	10512	B2-U0-G2	118.1	10288	B2-U0-G2	115.6	10386	B2-U0-G2	116.7	10195	B1-U0-G2	114.6	10610	B4-U0-G2	119.2
105W40LED-827-G1	1588	103.0	11523	B3-U0-G3	111.9	11851	B3-U0-G3	115.1	11599	B2-U0-G2	112.6	11709	B3-U0-G3	113.7	11495	B2-U0-G2	111.6	11962	B4-U0-G2	116.1
120W40LED-827-G1	1800	118.0	12830	B3-U0-G3	108.7	13196	B3-U0-G3	111.8	12915	B3-U0-G3	109.4	13037	B3-U0-G3	110.5	12799	B2-U0-G2	108.5	13319	B4-U0-G2	112.9
140W40LED-827-G1	2100	136.0	14667	B3-U0-G3	107.8	15085	B3-U0-G3	110.9	14764	B3-U0-G3	108.6	14904	B3-U0-G3	109.6	14631	B2-U0-G3	107.6	15226	B4-U0-G3	112.0
3000K / 80CRI																				
15W40LED-830-G1	240	14.3	2019	B1-U0-G1	140.8	2076	B1-U0-G1	144.8	2032	B1-U0-G1	141.7	2052	B1-U0-G1	143.1	2014	B0-U0-G1	140.4	2096	B2-U0-G1	146.1
20W40LED-830-G1	320	19.1	2682	B1-U0-G1	140.2	2758	B1-U0-G1	144.2	2699	B1-U0-G1	141.1	2725	B1-U0-G1	142.4	2675	B1-U0-G1	139.8	2784	B2-U0-G1	145.5
30W40LED-830-G1	440	26.8	3625	B1-U0-G1	135.5	3729	B1-U0-G1	139.3	3649	B1-U0-G1	136.4	3684	B1-U0-G1	137.7	3617	B1-U0-G1	135.1	3763	B3-U0-G1	140.6
35W40LED-830-G1	560	34.1	4580	B1-U0-G1	134.3	4711	B1-U0-G1	138.1	4611	B1-U0-G1	135.2	4654	B1-U0-G1	136.5	4569	B1-U0-G1	134.0	4755	B3-U0-G1	139.4
45W40LED-830-G1	712	43.7	5771	B2-U0-G2	132.2	5935	B2-U0-G2	135.9	5809	B1-U0-G1	133.0	5864	B2-U0-G2	134.3	5756	B1-U0-G2	131.8	5991	B3-U0-G1	137.2
65W40LED-830-G1	980	63.2	7780	B2-U0-G2	123.1	8002	B2-U0-G2	126.6	7831	B2-U0-G2	123.9	7906	B2-U0-G2	125.1	7761	B1-U0-G2	122.8	8076	B3-U0-G2	127.8
80W40LED-830-G1	1230	79.0	9545	B3-U0-G3	120.8	9817	B2-U0-G2	124.3	9608	B2-U0-G2	121.6	9699	B2-U0-G2	122.8	9522	B1-U0-G2	120.5	9909	B4-U0-G2	125.4
90W40LED-830-G1	1380	89.0	10717	B3-U0-G3	120.4	11022	B3-U0-G3	123.8	10788	B2-U0-G2	121.2	10890	B2-U0-G2	122.4	10690	B1-U0-G2	120.1	11125	B4-U0-G2	125.0
105W40LED-830-G1	1588	103.0	12082	B3-U0-G3	117.3	12427	B3-U0-G3	120.6	12162	B2-U0-G2	118.1	12278	B3-U0-G3	119.2	12053	B2-U0-G2	117.0	12543	B4-U0-G2	121.8
120W40LED-830-G1	1800	118.0	13453	B3-U0-G3	114.0	13836	B3-U0-G3	117.3	1354											

S-OSP OmniScape

LED Urban Post Top with LEDgine technology

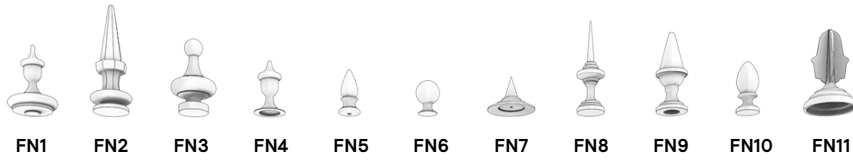
With Flat Lens: 40 LED qty, Standard Performance Lumen Values

Ordering Code	System Current (mA)	Avg. System Watts (W)	Type 2F			Type 2BF			Type 3F			Type 3WF			Type 4F			Type 5F		
			Lumen Output	BUG Rating	Effic. (LPW)	Lumen Output	BUG Rating	Effic. (LPW)	Lumen Output	BUG Rating	Effic. (LPW)	Lumen Output	BUG Rating	Effic. (LPW)	Lumen Output	BUG Rating	Effic. (LPW)	Lumen Output	BUG Rating	Effic. (LPW)
2700K / 70CRI, multiply 4000K values by 0.769 for 2200K																				
15W40LED-727-G1	240	14.3	1810	B1-U0-G1	126.2	1878	B1-U0-G1	131.0	1835	B1-U0-G1	128.0	1843	B1-U0-G1	128.5	1809	B0-U0-G1	126.1	1794	B1-U0-G1	125.1
20W40LED-727-G1	320	19.1	2404	B1-U0-G1	125.7	2494	B1-U0-G1	130.4	2438	B1-U0-G1	127.4	2449	B1-U0-G1	128.0	2402	B1-U0-G1	125.6	2383	B2-U0-G1	124.6
30W40LED-727-G1	440	26.8	3250	B1-U0-G1	121.4	3372	B1-U0-G1	126.0	3296	B1-U0-G1	123.2	3310	B1-U0-G1	123.7	3248	B1-U0-G1	121.4	3222	B2-U0-G1	120.4
35W40LED-727-G1	560	34.1	4106	B1-U0-G1	120.4	4261	B1-U0-G1	124.9	4164	B1-U0-G1	122.1	4182	B1-U0-G1	122.6	4104	B1-U0-G1	120.3	4071	B3-U0-G1	119.3
45W40LED-727-G1	712	43.7	5173	B1-U0-G1	118.5	5368	B2-U0-G2	122.9	5246	B1-U0-G1	120.1	5269	B1-U0-G1	120.7	5170	B1-U0-G1	118.4	5129	B3-U0-G1	117.5
65W40LED-727-G1	980	63.2	6974	B2-U0-G2	110.4	7237	B2-U0-G2	114.5	7072	B2-U0-G2	106.6	7104	B2-U0-G2	112.4	6970	B2-U0-G2	110.3	6914	B3-U0-G1	109.4
80W40LED-727-G1	1230	79.0	8557	B2-U0-G2	108.3	8879	B2-U0-G2	112.4	8677	B2-U0-G2	109.8	8715	B2-U0-G2	110.3	8552	B1-U0-G2	108.2	8483	B3-U0-G2	107.4
90W40LED-727-G1	1380	89.0	9607	B2-U0-G2	107.9	9969	B2-U0-G2	112.0	9742	B2-U0-G2	109.5	9785	B2-U0-G2	109.9	9601	B2-U0-G2	107.9	9525	B3-U0-G2	107.0
105W40LED-727-G1	1588	103.0	10831	B2-U0-G2	105.2	11239	B3-U0-G3	109.1	10983	B2-U0-G2	106.6	11032	B2-U0-G2	107.1	10825	B2-U0-G2	105.1	10738	B4-U0-G2	104.3
120W40LED-727-G1	1800	118.0	12060	B3-U0-G3	102.2	12514	B3-U0-G3	106.0	12229	B2-U0-G2	103.6	12284	B2-U0-G2	104.1	12053	B2-U0-G2	102.1	11957	B4-U0-G2	101.3
140W40LED-727-G1	2100	136.0	13787	B3-U0-G3	101.4	14306	B3-U0-G3	105.2	13980	B3-U0-G3	102.8	14042	B3-U0-G3	103.3	13778	B2-U0-G2	101.3	13668	B4-U0-G2	100.5
3000K / 70CRI																				
15W40LED-730-G1	240	14.3	1974	B1-U0-G1	137.7	2049	B1-U0-G1	142.9	2002	B1-U0-G1	139.6	2011	B1-U0-G1	140.2	1973	B1-U0-G1	137.6	1957	B1-U0-G1	136.5
20W40LED-730-G1	320	19.1	2622	B1-U0-G1	137.1	2721	B1-U0-G1	142.2	2659	B1-U0-G1	139.0	2671	B1-U0-G1	139.6	2621	B1-U0-G1	137.0	2600	B2-U0-G1	135.9
30W40LED-730-G1	440	26.8	3545	B1-U0-G1	132.5	3679	B1-U0-G1	137.5	3595	B1-U0-G1	134.3	3611	B1-U0-G1	134.9	3543	B1-U0-G1	132.4	3515	B2-U0-G1	131.4
35W40LED-730-G1	560	34.1	4479	B1-U0-G1	131.3	4648	B1-U0-G1	136.3	4542	B1-U0-G1	133.2	4563	B1-U0-G1	133.8	4477	B1-U0-G1	131.2	4441	B3-U0-G1	130.2
45W40LED-730-G1	712	43.7	5643	B2-U0-G1	129.3	5856	B2-U0-G2	134.1	5723	B2-U0-G1	131.1	5748	B1-U0-G1	131.7	5640	B1-U0-G1	129.2	5595	B3-U0-G1	128.1
65W40LED-730-G1	980	63.2	7608	B2-U0-G2	120.4	7895	B2-U0-G2	124.9	7715	B2-U0-G2	122.1	7749	B2-U0-G2	122.6	7604	B1-U0-G2	120.3	7543	B3-U0-G2	119.3
80W40LED-730-G1	1230	79.0	9334	B2-U0-G2	118.2	9686	B2-U0-G2	122.6	9465	B2-U0-G2	119.8	9508	B2-U0-G2	120.3	9329	B2-U0-G2	118.1	9254	B3-U0-G2	117.1
90W40LED-730-G1	1380	89.0	10480	B2-U0-G2	117.8	10875	B3-U0-G3	122.2	10627	B2-U0-G2	119.4	10675	B2-U0-G2	119.9	10474	B2-U0-G2	117.7	10390	B4-U0-G2	116.7
105W40LED-730-G1	1588	103.0	11816	B3-U0-G3	114.7	12261	B3-U0-G3	119.0	11982	B2-U0-G2	116.3	12035	B2-U0-G2	116.8	11809	B2-U0-G2	114.6	11715	B4-U0-G2	113.7
120W40LED-730-G1	1800	118.0	13156	B3-U0-G3	111.5	13651	B3-U0-G3	115.7	13341	B2-U0-G2	113.1	13400	B3-U0-G3	113.6	13148	B2-U0-G2	111.4	13043	B4-U0-G2	110.5
140W40LED-730-G1	2100	136.0	15040	B3-U0-G3	110.6	15606	B3-U0-G3	114.8	15251	B3-U0-G3	112.1	15319	B3-U0-G3	112.6	15031	B2-U0-G2	110.5	14911	B4-U0-G2	109.6
4000K / 70CRI																				
15W40LED-740-G1	240	14.3	2057	B1-U0-G1	143.4	2134	B1-U0-G1	148.8	2085	B1-U0-G1	145.4	2095	B1-U0-G1	146.1	2055	B1-U0-G1	143.3	2039	B2-U0-G1	142.2
20W40LED-740-G1	320	19.1	2732	B1-U0-G1	142.8	2835	B1-U0-G1	148.2	2770	B1-U0-G1	144.8	2782	B1-U0-G1	145.4	2730	B1-U0-G1	142.7	2708	B2-U0-G1	141.6
30W40LED-740-G1	440	26.8	3693	B1-U0-G1	138.0	3832	B1-U0-G1	143.2	3745	B1-U0-G1	139.9	3762	B1-U0-G1	140.6	3691	B1-U0-G1	137.9	3662	B2-U0-G1	136.8
35W40LED-740-G1	560	34.1	4666	B1-U0-G1	136.8	4842	B1-U0-G1	141.9	4732	B1-U0-G1	138.7	4753	B1-U0-G1	139.3	4663	B1-U0-G1	136.7	4626	B3-U0-G1	135.6
45W40LED-740-G1	712	43.7	5878	B2-U0-G2	134.6	6100	B2-U0-G2	139.7	5961	B2-U0-G1	136.5	5988	B1-U0-G1	137.1	5875	B1-U0-G1	134.6	5828	B3-U0-G1	133.5
65W40LED-740-G1	980	63.2	7925	B2-U0-G2	125.4	8223	B2-U0-G2	130.1	8036	B2-U0-G2	127.2	8072	B2-U0-G2	127.7	7920	B1-U0-G2	125.3	7857	B3-U0-G2	124.3
80W40LED-740-G1	1230	79.0	9723	B2-U0-G2	123.1	10089	B2-U0-G2	127.7	9860	B2-U0-G2	124.8	9904	B2-U0-G2	125.4	9718	B2-U0-G2	123.0	9640	B3-U0-G2	122.0
90W40LED-740-G1	1380	89.0	10917	B2-U0-G2	122.7	11328	B3-U0-G3	127.3	11070	B2-U0-G2	124.4	11120	B2-U0-G2	124.9	10910	B2-U0-G2	122.6	10823	B4-U0-G2	121.6
105W40LED-740-G1	1588	103.0	12308	B3-U0-G3	119.5	12772	B3-U0-G3	124.0	12481	B2-U0-G2	121.2	12537	B3-U0-G3	121.7	12301	B2-U0-G2	119.4	12203	B4-U0-G2	118.5
120W40LED-740-G1	1800	118.0	13704	B3-U0-G3	116.1	14220	B3-U0-G3	120.5	13897	B3-U0-G3	117.8	13959	B3-U0-G3	118.3	13696	B2-U0-G2	116.1	13587	B4-U0-G2	115.1
140W40LED-740-G1	2100	136.0	15667	B3-U0-G3	115.2	16256	B3-U0-G3	119.5	15887	B3-U0-G3	116.8	15957	B3-U0-G3	117.3	15657	B2-U0-G2	115.1	15532	B4-U0-G2	114.2
2700K / 80CRI																				
15W40LED-827-G1	240	14.3	1695	B1-U0-G1	118.2	1758	B1-U0-G1	122.6	1718	B1-U0-G1	119.8	1726	B1-U0-G1	120.4	1694	B0-U0-G1	118.1	1680	B1-U0-G1	117.2
20W40LED-827-G1	320	19.1	2251	B1-U0-G1	117.7	2336	B1-U0-G1	122.1	2283	B1-U0-G1	119.3	2293	B1-U0-G1	119.8	2250	B1-U0-G1	117.6	2232	B2-U0-G1	116.7
30W40LED-827-G1	440	26.8	3043	B1-U0-G1	113.7	3158	B1-U0-G1	118.0	3086	B1-U0-G1	115.3	3100	B1-U0-G1	115.8	3041	B1-U0-G1	113.6	3017	B2-U0-G1	112.7
35W40LED-827-G1	560	34.1	3845	B1-U0-G1	112.7	3989	B1-U0-G1	117.0	3899	B1-U0-G1	114.3	3916	B1-U0-G1	114.8	3843	B1-U0-G1	112.7	3812	B2-U0-G1	111.8
45W40LED-827-G1	712	43.7	4844	B1-U0-G1	110.9	5026	B2-U0-G1	115.1	4912	B1-U0-G1	112.5	4934	B1-U0-G1	113.0	4841	B1-U0-G1	110.9	4802	B3-U0-G1	110.0
65W40LED-827-G1	980	63.2	6530	B2-U0-G2	103.3	6776	B2-U0-G2	107.2	6622	B2-U0-G1	104.8	6652	B2-U0-G2	105.2	6526	B1-U0-G2	103.3	6474	B3-U0-G1	102.4
80W40LED-827-G1	1230	79.0	8012	B2-U0-G2	101.4	8314	B2-U0-G2	105.2	8125	B2-U0-G2	102.8	8161	B2-U0-G2	103.3	8007	B1-U0-G2	101.4	7943	B3-U0-G2	100.5
90W40LED-827-G1	1380	89.0	8996	B2-U0-G2	101.1	9334	B2-U0-G2	104.9	9122	B2-U0-G2	102.5	9163	B2-U0-G2	102.9	8990	B2-U0-G2	101.0	8918	B3-U0-G2	100.2
105W40LED-827-G1	1588	103.0	10142	B2-U0-G2	98.5	10524	B2-U0-G2	102.2	10284	B2-U0-G2	99.8	10330	B2-U0-G2	100.3	10136	B2-U0-G2	98.4	10055	B4-U0-G2	97.6
120W40LED-827-G1	1800	118.0	11292	B2-U0-G2	95.7	11717	B3-U0-G3	99.3	11451	B2-U0-G2	97.0	11502	B2-U0-G2	97.5	11286	B2-U0-G2	95.6	11196	B4-U0-G2	94.9
140W40LED-827-G1	2100	136.0	12909	B3-U0-G3	94.9	13395	B3-U0-G3	98.5	13090	B2-U0-G2	96.3	13149	B3-U0-G3	96.7	12902	B2-U0-G2	94.9	12799	B4-U0-G2	94.1
3000K / 80CRI																				
15W40LED-830-G1	240	14.3	1777	B1-U0-G1	123.9	1844	B1-U0-G1	128.6	1802	B1-U0-G1	125.6	1810	B1-U0-G1	126.2	1776	B0-U0-G1	123.8	1762	B1-U0-G1	122.9
20W40LED-830-G1	320	19.1	2360	B1-U0-G1	123.4	2449	B1-U0-G1	128.0	2393	B1-U0-G1	125.1	2404	B1-U0-G1	125.7	2359	B1-U0-G1	123.3	2340	B2-U0-G1	122.3
30W40LED-830-G1	440	26.8	3191	B1-U0-G1	119.2	3311	B1-U0-G1	123.7	3236	B1-U0-G1	120.9	3250	B1-U0-G1	121.4	3189	B1-U0-G1	119.2	3164	B2-U0-G1	118.2
35W40LED-830-G1	560	34.1	4032	B1-U0-G1	118.2	4183	B1-U0-G1	122.6	4088	B1-U0-G1	119.8	4106	B1-U0-G1	120.4	4029	B1-U0-G1	118.1	3997	B3-U0-G1	117.2
45W40LED-830-G1	712	43.7	5079	B1-U0-G1	116.3	5270	B2-U0-G1	120.7	5150	B1-U0-G1	118.0	5173	B1-U0-G1	118.5	5076	B1-U0-G1	116.3	5035	B3-U0-G1	115.3
65W40LED-830-G1	980	63.2	6847	B2-U0-G2	108.3	7105	B2-U0-G2	112.4	6943	B2-U0-G2	109.9	6974	B2-U0-G2	110.4	6843	B1-U0-G2	108.3	6789	B3-U0-G1	107.4
80W40LED-830-G1	1230	79.0	8401	B2-U0-G2	106.3	8717	B2-U0-G2	110.3	8519	B2-U0-G2	107.8	8557	B2-U0-G2	108.3	8396	B1-U0-G2	106.3	8329	B3-U0-G2	105.4
90W40LED-830-G1	1380	89.0	9432	B2-U0-G2	106.0	9787	B2-U0-G2	110.0	9565	B2-U0-G2	107.5	9607	B2-U0-G2	107.9	9427	B2-U0-G2	105.9	9351	B3-U0-G2	105.1
105W40LED-830-G1	1588	103.0	10634	B2-U0-G2	103.2	11035	B3-U0-G3	107.1	10784	B2-U0-G2	104.7	10832	B2-U0-G2	105.2	10628	B2-U0-G2	103.2	10543	B4-U0-G2	102.4
120W40LED-830-G1	1800	118.0	11841	B3-U0-G3	100.3	12286	B3-U0-G3	104.1	12007	B2-U0-G2	101.8	12060	B2-U0-G2	102.2	1					

S-OSP OmniScape

LED Urban Post Top with LEDgine technology

Finials



Roofs



Cages



Fitters



S-OSP OmniScape

LED Urban Post Top with LEDgine technology

Contemporary configurations with Skirts



S-OSPCCC



S-OSPCCC with Skirt



S-OSPTCC with Skirt



S-OSPHCC with Skirt

Transitional configurations with Skirts



S-OSPCTT



S-OSPCTT with Skirt



S-OSPTTT with Skirt



S-OSPHTT with Skirt

Historical configurations with Skirts



S-OSPCHH



S-OSPCHH with Skirt



S-OSPTHH with Skirt



S-OSPHHH with Skirt

S-OSP OmniScape

LED Urban Post Top with LEDgine technology

Specifications

Housing

In a round shape, this housing is made of injection die cast A360.1 aluminium alloy 0.1 (2.5mm) minimum thickness, composed of a hood and heat sink mechanically assembled. C/w latch giving a tool free access. Housing is rated IP66.

Roof

With Transitional and Historical Roof Series: In a round shape, hood is made of spun 1100 aluminum alloy 0.080 (2mm), mechanically assembled to the housing with four (4) 10 24 UNC screws.

Cage

In a round shape with 4 arms, each arm is a one-piece permanent mold A356 Aluminum alloy 0.188 (4.8mm) minimum thickness, mechanically assembled to the housing and fitter.

Fitter

Made of permanent mold A356 Aluminum alloy 0.188 (4.8mm) minimum thickness. Comes with an easy self adjusting system with two (2) set screws 3/8 16 UNC for ease of maintenance and installation. Fits on a 4" (102mm) outside diameter by 4" (102mm) long tenon.

Light Engine

LEDgine Technology is composed of 4 main components: Heat Sink / LED Module / Optical System / Driver.

Electrical components are RoHS compliant, IP66 sealed light engine. LEDs tested by ISO 17025-2005 accredited lab in accordance with IESNA LM-80 guidelines, extrapolations in accordance with IESNA TM-21. Metal core board ensures greater heat transfer and longer lifespan.

Lens (optional)

With Type 2BF, 2F ,3F ,3W F,4F & 5F optics. Made of soda lime tempered glass lens, mechanically assembled, and sealed onto the housing.

LED Module

Composed of high-performance white LEDs. Color temperature as per ANSI/NEMA bin 4000 Kelvin nominal (3985K +/- 275K or 3710K to 4260K) or 3000 Kelvin nominal (3045K +/- 175K or 2870K to 3220K) or 2700 Kelvin nominal (2725K +/- 145K or 2580K to 2870K), CRI 70 or CRI 80.

Optical System

Composed of high-performance UV stabilized optical grade polymer refractor lenses to achieve desired distribution optimized to get maximum spacing, target lumens and a superior lighting uniformity. System is rated IP66. Performance shall be tested per LM 63, LM 79 and TM 15 (IESNA) certifying its photometric performance. Luminaire designed with 0% uplight and U0 per IESNA TM 15 and complies with Dark Sky requirements (3000K or lower only).

Heat Sink

Made of cast aluminum optimising the LEDs efficiency and life. Product does not use any cooling device with moving parts (only passive cooling device).

Driver

High power factor of 90% minimum electronic driver, operating range 50/60 Hz. Auto adjusting universal voltage input rated for both application line-to-line or line-to-neutral, THD of 20% max. Driver comes with dimming compatible 0-10 volts.

UNV: 120 to 277VAC

HVU: 347 to 480VAC

HVX: Extended voltage range (277-480VAC). Provides additional protection for abnormal power conditions like neutral drop on 277V installs or others.

The current supplying the LEDs will be reduced by driver if the driver experiences internal overheating as a protection to the LEDs and the electrical components. Output is protected from short circuits, voltage overload and current overload. Automatic recovery after correction.

Surge Protection

Surge protector tested in accordance with ANSI/IEEE C62.45 per ANSI/IEEE C62.41.2 Scenario I Category C High Exposure 10kV/10kA waveforms for Line Ground, Line Neutral and Neutral Ground, and in accordance with U.S. DOE (Department of Energy) MSSSLC (Municipal Solid State Street Lighting Consortium) model specification for LED roadway luminaires electrical immunity requirements for High Test Level 10kV/10kA.

Driver options

ZD4i*: Zhaga-D4i certified fixture (add connector text if needed). Provides easy integration with zD4i smart sensors and communication nodes, enabling plug-and-play IoT upgrades.

DMG: Dimmable driver 0-10V

D4id*: DALI D4i certified driver. Provides extended DALI-2 functionality with power and data, especially for intra-luminaire DALI systems (Driver-Nodes-Sensors). Backward compatible with older DALI standards.

* These driver options ship with DALI bus power turned on and luminaire information loaded in Memory banks 1 as per ANSI C137.4 (2021). Consult factory for any other driver programming requirement.

Receptacles options

TLRD7: Receptacle with 7 pins enabling dimming and with two extra connections for future use (these connections are capped off at the factory requires connections to be made in the field), can be used with a twist lock control device or photoelectric cell or a shorting cap. Use of photocell or shorting cap is required to ensure proper illumination.

TLRSR: SR Sensor connector with 4 pins, installed on fixture. Shipped with protective cover.

Control options

FAWS: Field Adjustable Wattage Selector, pre-set to the highest position, can be easily switched in the field to the required position. This reduces total luminaire wattage consumption and reduces the light level – see the FAWS multiplier chart for more details.

OMS: Outdoor Multi Sensor

PH8S: IP66, Twist-lock UNV (120-277VAC)

PH8/347S: IP66, Twist-lock (347VAC)

PH8/480S: IP66, Twist-lock (480VAC)

PH9S: IP66, Shorting Cap

PHXLS: IP66, Extended life UNV (120-277VAC)

Luminaire options

FAWS: Field Adjustable Wattage Selector, pre-set to the highest position, can be easily switched in the field to the required position. This reduces total luminaire wattage consumption and reduces the light level – see the FAWS multiplier chart for more.

HS: House Side Shield. Shields light output to the back side of fixture.

SP2: Fail-On 20kV/10kA surge protection device that provides extra protection beyond standard 10kV/10kA level.

TN3: Fitter to fit over a 3" (76 mm) O.D. by 4" (102 mm) tenon.

TN3.5: Fitter to fit over a 3-1/2" (89 mm) O.D. by 4" (102 mm) tenon

Decorative options

FNx: Selection of decorative cast 356 aluminum finials, mechanically assembled.

S: Decorative skirt. Spun 1100 Aluminum alloy 0.080 (2mm), mechanically assembled to the housing with four (4) 10-24 UNC screws.

Finish

The Thermosetting powder coating provided meets the color requirements of the AAMA 2604 specification as measured per ASTM D2244. The Thermosetting product is applied at a dry film of 2.5 to 4.0 mils (64-102 microns) on textured finishes, resulting in a durable long-lasting finish.

LED manufacturing standard

The electronic components sensitive to electrostatic discharge (ESD) such as light emitting diodes (LEDs) are assembled in compliance with IEC61340 5 1 and ANSI/ESD S20.20 standards to eliminate ESD events that could decrease useful life of the product.

Quality Control

Manufactured to ISO 9001 2015 and ISO 14001 2015 International Quality Standards Certification.

Vibration Resistance

Meets the ANSI C136.31, American National Standard for Roadway Luminaire Vibration specifications for Bridge/overpass applications, for all configurations except if contemporary cage is selected (S-OSPCx). Tested for 3G over 100 000 cycles by an independent lab.

S-OSP OmniScape

LED Urban Post Top with LEDgine technology

Specifications (continued)

Service Tag

Each individual luminaire is uniquely identifiable, thanks to the Service tag application. With a simple scan of a QR code, placed inside the luminaire, you gain instant access to the luminaire configuration, making installation and maintenance operations faster and easier, no matter what stage of the luminaire's lifetime. Just download the APP and register your product right away.

For more details visit: signify.com/servicetag

Certifications and Compliance

cULus Listed for Canada and USA.

DesignLights Consortium qualified (DLC). Consult DLC Qualified Product Lists to confirm specific configuration is approved.

CCTs 3000K and warmer are IDA Dark Sky Approved.

Limited Warranty

5-year limited warranty. See signify.com/warranties for details and restrictions.