



FlexFit (Hybrid UL Type A + B) T8

14T8/MAS/48-5CCT/FF21/P/DIM 25/1

MasterClass, LEDtube, T8, 47-1/4 inch, 14 W, 14.5 W, Selectable, 3000 K, 3500 K, 4000 K, 5000 K, 6500 K, 2100 lm, 2100 lm, 2100 lm, 2100 lm, 2100 lm, 70000 hour(s)

MasterClass, LEDtube, T8, 47-1/4 inch, 14 W, 14.5 W, Selectable, 3000 K, 3500 K, 4000 K, 5000 K, 6500 K, 2100 lm, 2100 lm, 2100 lm, 2100 lm, 2100 lm, 70000 hour(s), 144 lm/W, G13, Plastic, 0 %

Product data

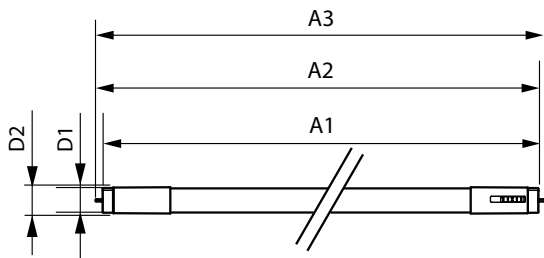
General Information		LLMF At End Of Nominal Lifetime (Nom)	
Cap-Base	G13		70 %
Nominal lifetime	70,000 hour(s)	Operating and Electrical	
Switching Cycle	50,000	Input Frequency	50 to 60 Hz
Lighting Technology	LEDtube	Power Consumption	14 14.5 W
Light Technical		Lamp Current (Max)	160 mA
Color Code	3000K/3500K/4000K/5000K/6500K	Lamp Current (Min)	56 mA
Beam Angle (Nom)	220 degree(s)	Wattage Equivalent	32 W
Luminous Flux	2,100 2,100 2,100 2,100 2,100 lm	Starting Time (Nom)	0.5 s
Color Designation	3000K/3500K/4000K/5000K/6500K	Warm-up time to 60% light	0.5 s
Correlated Color Temperature (Nom)	Selectable 3000 3500 4000 5000 6500 K	Power Factor (Fraction)	0.9
Luminous Efficacy (rated) (Nom)	144 lm/W	Voltage (Nom)	120-277 V
Color Consistency	<6	UL Type	UL Type A+B
Color rendering index (CRI)	80		

FlexFit (Hybrid UL Type A + B) T8

Temperature	
T-Case Maximum (Nom)	122 °F
Controls and Dimming	
Dimmable	Only with specific dimmers
Mechanical and Housing	
Bulb Finish	Frosted
Bulb Material	Plastic
Product Length	47-1/4 inch
Bulb Shape	T8
Net Weight (Piece)	0.43 lb
Approval and Application	
Energy Saving Product	Yes
Approval Marks	RoHS compliance UL certificate DLC compliance
EU RoHS compliant	Yes
Ambient temperature range	-4 to +113 °F
Post-consumer recycled plastic material ratio	0 %

Application Conditions	
can it be used in closed luminaires	Yes
Wireless Technology	Not applicable
Sustainability Data	
Product non-virgin material ratio	0 %
Product Data	
Order product name	14T8/MAS/48-5CCT/FF21/P/DIM 25/1
Full product name	14T8/MAS/48-5CCT/FF21/P/DIM 25/1
Order code	610634
Material Nr. (12NC)	929004323104
Numerator - Quantity Per Pack	1
EAN/UPC - Product/Case	046677610630
Numerator - Packs per outer box	25
EAN/UPC - Case	50046677610635

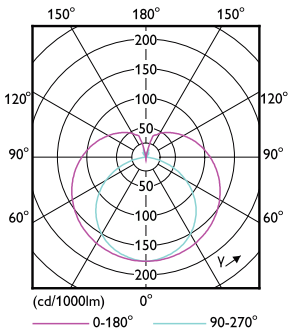
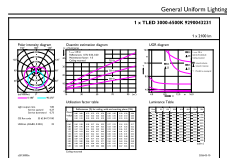
Dimensional drawing



D1	D2	A1	A2	A3
25.7mm	27.9mm	1198mm	1205mm	1212mm

Product	D1	D2	A1	A2	A3
14T8/MAS/48-5CCT/FF21/P/DIM 25/1	1-1/16 inch	1-1/8 inch	47-3/16 inch	47-1/2 inch	47-3/4 inch

Photometric data

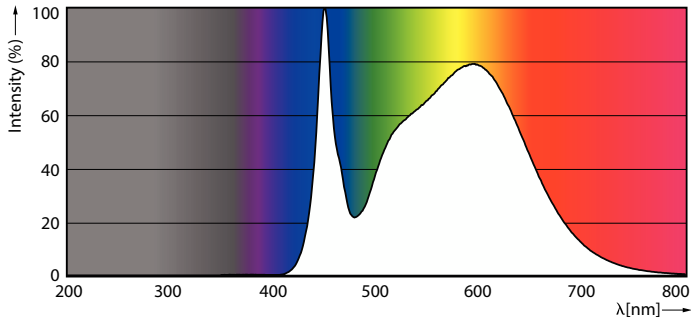


General uniform lighting - 14T8/MAS/48-5CCT/FF21/P/DIM 25/1

Light Distribution Diagram - 14T8/MAS/48-5CCT/FF21/P/DIM 25/1

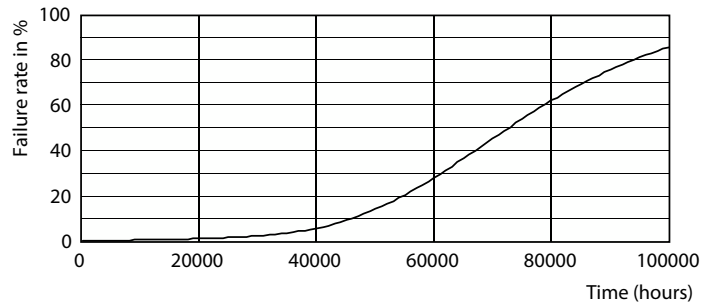
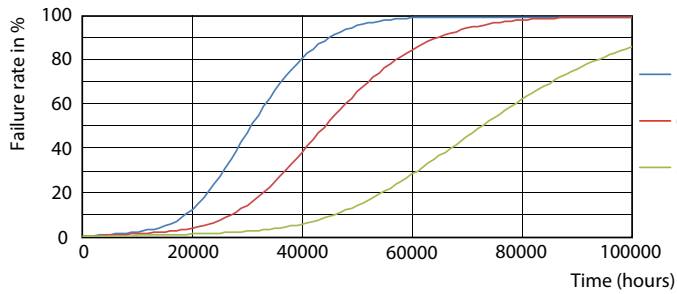
FlexFit (Hybrid UL Type A + B) T8

Photometric data



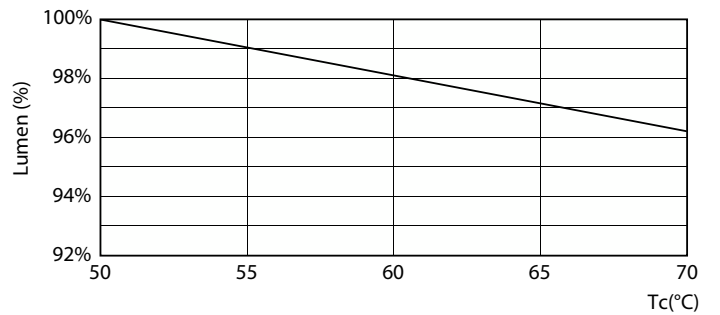
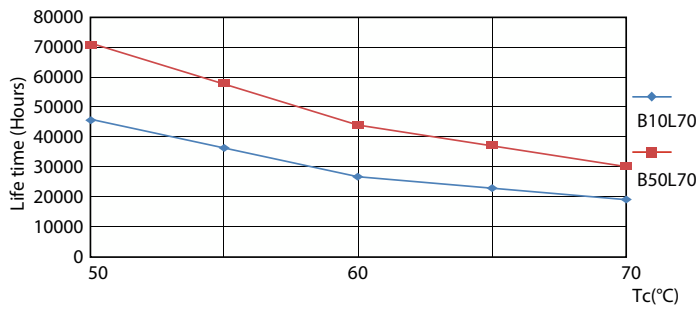
Spectral Power Distribution Colour - 14T8/MAS/48-5CCT/FF21/P/DIM 25/1

Lifetime



LEDtube 70K 5070 FailureRate-LED

Life Expectancy Diagram

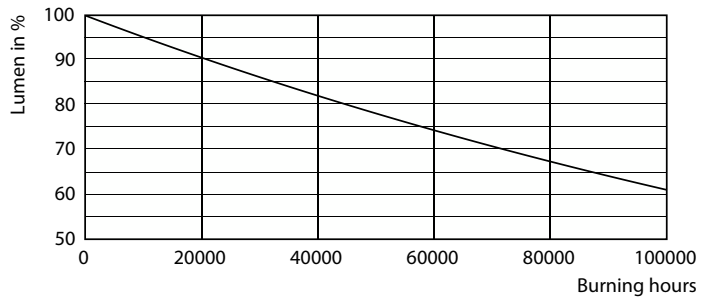


LEDtube 70K 5070 LifetimeVsTc-LED

Lumen Maintenance Diagram - 14T8/MAS/48-5CCT/FF21/P/DIM 25/1

FlexFit (Hybrid UL Type A + B) T8

Lifetime



Lumen Maintenance Diagram - 14T8/MAS/48-5CCT/FF21/P/DIM 25/1

