



MasterClass InstantFit (UL Type- A) T8

8.5T8/MAS/36-835/IF13/P/DIM 10/1

MasterClass, LEDtube, T8, 900 mm, 8.5 W, 3500 K, 1350 lm, 70000 hour(s)

MasterClass, LEDtube, T8, 900 mm, 8.5 W, 3500 K, 1350 lm, 70000 hour(s), 158 lm/W, G13, Plastic

Product data

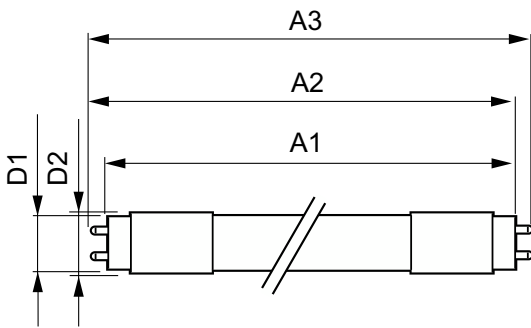
General Information		LLMF At End Of Nominal Lifetime (Nom) 70 %	
Cap-Base	G13		
Nominal lifetime	70,000 hour(s)		
Switching Cycle	50,000		
Lighting Technology	LEDtube		
Light Technical		Operating and Electrical	
Color Code	835 [CCT of 3500K]	Line Frequency	20K to 120K Hz
Beam Angle (Nom)	180 degree(s)	Input Frequency	20K to 120K Hz
Luminous Flux	1,350 lm	Power Consumption	8.5 W
Color Designation	White (WH)	Lamp Current (Max)	280 mA
Correlated Color Temperature (Nom)	3500 K	Lamp Current (Min)	50 mA
Luminous Efficacy (rated) (Nom)	158 lm/W	Wattage Equivalent	25 W
Color Consistency	<6	Starting Time (Nom)	0.5 s
Color rendering index (CRI)	80	Warm-up time to 60% light	0.5 s
		Power Factor (Fraction)	0.9
		Voltage (Nom)	120-277,347 V
		UL Type	UL Type A

MasterClass InstantFit (UL Type-A) T8

Temperature	
T-Case Maximum (Nom)	40 °C
Controls and Dimming	
Dimmable	Only with specific dimmers
Mechanical and Housing	
Bulb Finish	Frosted
Bulb Material	Plastic
Product Length	900 mm
Bulb Shape	T8
Net Weight (Piece)	0.130 kg
Approval and Application	
Energy Saving Product	Yes
Approval Marks	RoHS compliance UL certificate DLC compliance
Energy Certifications	DLC Standard

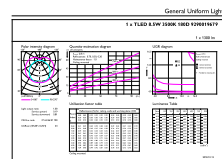
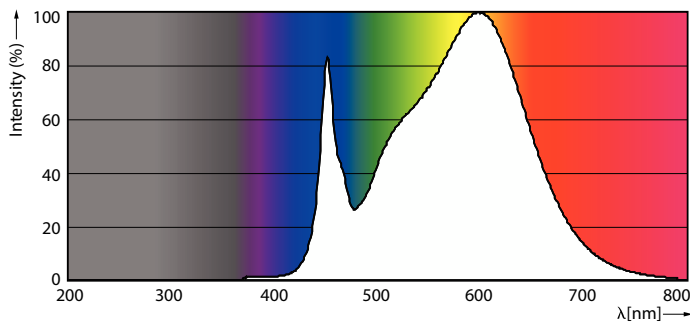
EU RoHS compliant	Yes
Ambient temperature range	-20 °C to 45 °C
Application Conditions	
can it be used in closed luminaires	Yes
Wireless Technology	Not applicable
Product Data	
Order product name	8.5T8/MAS/36-835/IF13/P/DIM 10/1
Full product name	8.5T8/MAS/36-835/IF13/P/DIM 10/1
Order code	539866
Material Nr. (12NC)	929001967904
Numerator - Quantity Per Pack	1
EAN/UPC - Product/Case	046677539863
Numerator - Packs per outer box	10
EAN/UPC - Case	50046677539868

Dimensional drawing



Product	D1	D2	A1	A2	A3
8.5T8/MAS/36-835/IF13/P/DIM 10/1	25.7 mm	26.3 mm	893.4 mm	900.5 mm	907.6 mm

Photometric data

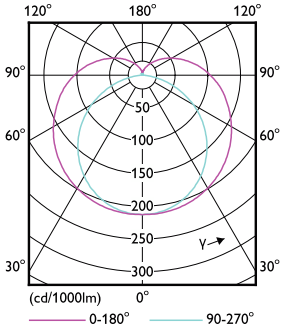


Spectral Power Distribution Colour - 8.5T8/MAS/36-835/IF13/P/DIM 10/1

General uniform lighting - 8.5T8/MAS/36-835/IF13/P/DIM 10/1

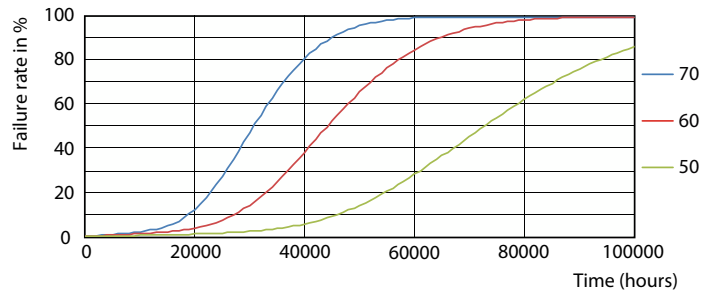
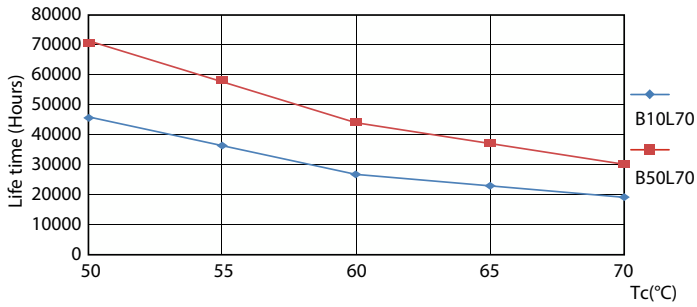
MasterClass InstantFit (UL Type-A) T8

Photometric data



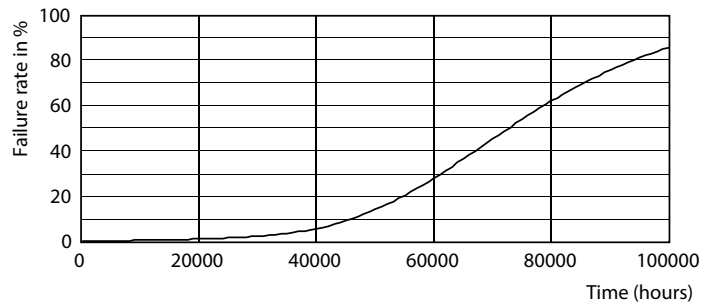
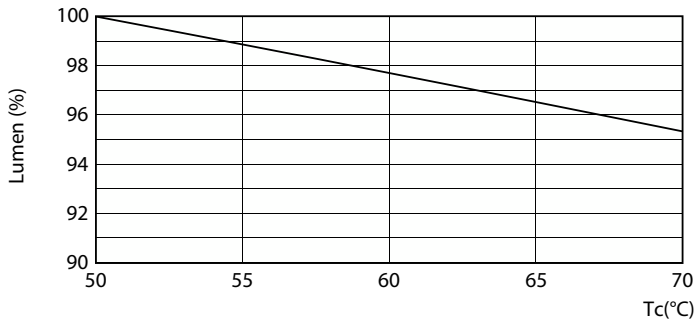
Light Distribution Diagram - 8.5T8/MAS/36-835/IF13/P/DIM 10/1

Lifetime



G13 4000K

G13 4000K

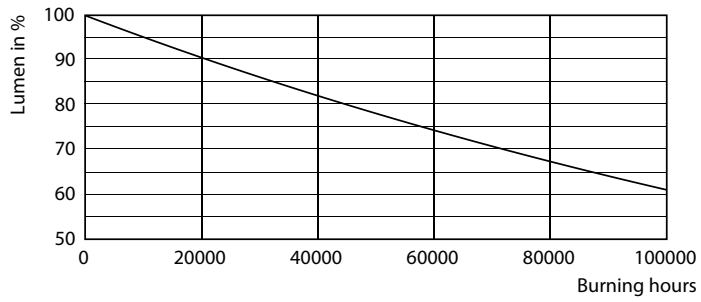


Lumen Maintenance Diagram - 8.5T8/MAS/36-835/IF13/P/DIM 10/1

G13 4000K

MasterClass InstantFit (UL Type-A) T8

Lifetime



Lumen Maintenance Diagram - 8.5T8/MAS/36-835/IF13/P/DIM 10/1

