



PL-C/T

5.5PL-C/LED/13H/835/IF5/P/4P 20/1

CorePro, LED, PL-C, 4-13/16 inch, 5.5 W, 3500 K, 550 lm, 50000 hour(s)

CorePro, LED, PL-C, 4-13/16 inch, 5.5 W, 3500 K, 550 lm, 50000 hour(s), 100.00 lm/W, G24q, Plastic

Product data

General Information	
Cap-Base	G24q
Nominal lifetime	50,000 hour(s)
Switching Cycle	50,000
Lighting Technology	LED
Light Technical	
Color Code	835 [CCT of 3500K]
Beam Angle (Nom)	150 degree(s)
Luminous Flux	550 lm
Color Designation	White (WH)
Correlated Color Temperature (Nom)	3500 K
Luminous Efficacy (rated) (Nom)	100.00 lm/W
Color Consistency	<6
Color rendering index (CRI)	82
LLMF At End Of Nominal Lifetime (Nom)	70 %
Operating and Electrical	
Line Frequency	25000-100000 Hz
Input Frequency	25000-100000 Hz
Power Consumption	5.5 W

Lamp Current (Max)	280 mA
Lamp Current (Min)	130 mA
Wattage Equivalent	13 W
Starting Time (Nom)	0.5 s
Warm-up time to 60% light	0.5 s
Power Factor (Fraction)	0.9
Voltage (Nom)	14-60 V
UL Type	UL Type A

Temperature	
T-Case Maximum (Nom)	167 °F

Controls and Dimming	
Dimmable	Yes

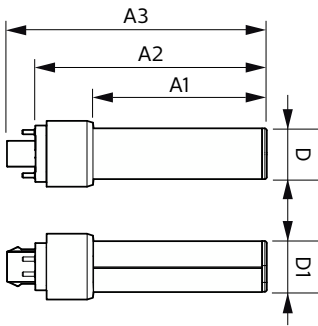
Mechanical and Housing	
Bulb Finish	Frosted
Bulb Material	Plastic
Product Length	4-13/16 inch
Bulb Shape	PL-C

PL-C/T

Net Weight (Piece)	0.132 lb
Approval and Application	
Energy Saving Product	Yes
Approval Marks	RoHS compliance UL certificate
EU RoHS compliant	Yes
Ambient temperature range	-4 °F to 113 °F
Application Conditions	
can it be used in closed luminaires	Yes
Wireless Technology	Not applicable

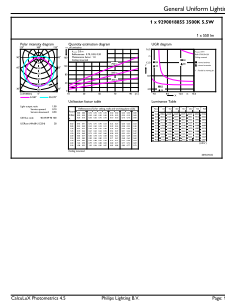
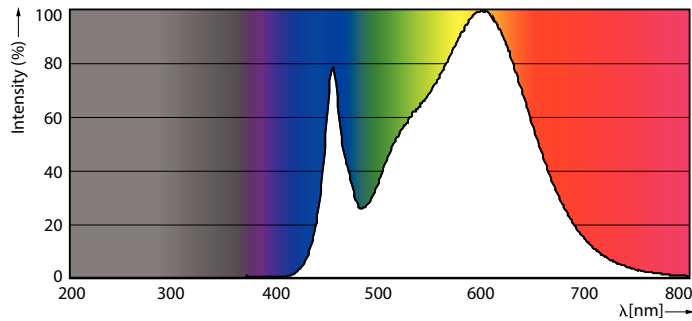
Product Data	
Order product name	5.5PL-C/LED/13H/835/IF5/P/4P 20/1
Full product name	5.5PL-C/LED/13H/835/IF5/P/4P 20/1
Order code	532416
Material Nr. (12NC)	929001885504
Numerator - Quantity Per Pack	1
EAN/UPC - Product/Case	046677532413
Numerator - Packs per outer box	20
EAN/UPC - Case	50046677532418

Dimensional drawing



Product	D1	D2	A1	A2	A3
5.5PL-C/LED/13H/835/IF5/P/4P 20/1	1-1/16 inch	1-1/16 inch	3-5/8 inch	4-13/16 inch	5-7/16 inch

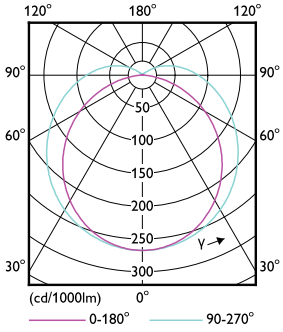
Photometric data



Spectral Power Distribution Colour - 5.5PL-C/LED/13H/835/IF5/P/4P 20/1

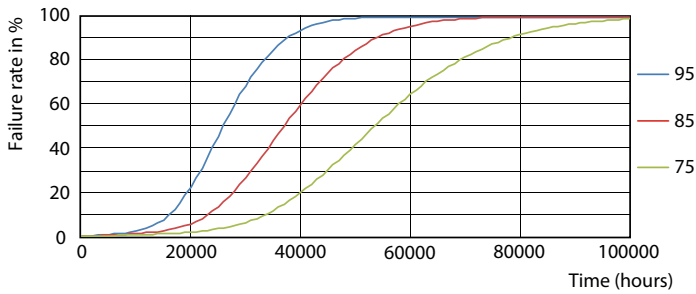
General uniform lighting - 5.5PL-C/LED/13H/835/IF5/P/4P 20/1

Photometric data

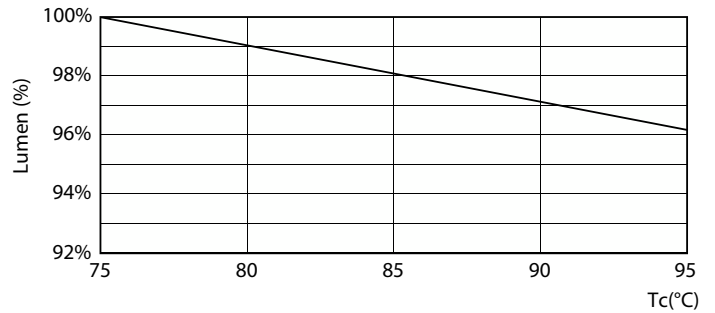


Light Distribution Diagram - 5.5PL-C/LED/13H/835/IF5/P/4P 20/1

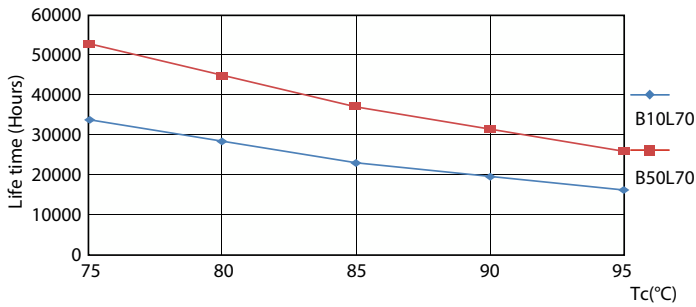
Lifetime



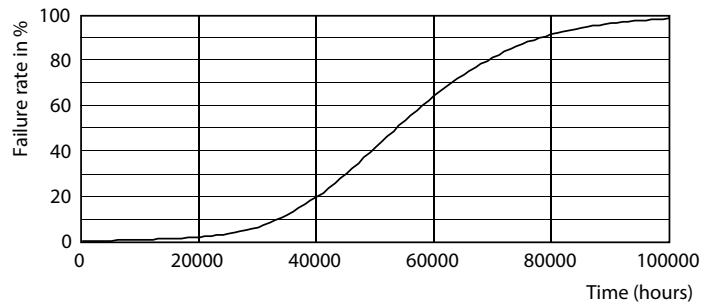
LEDtube PLC 13H 5.5W G24Q 827 15D ND



Lumen Maintenance Diagram - 5.5PL-C/LED/13H/835/IF5/P/4P 20/1

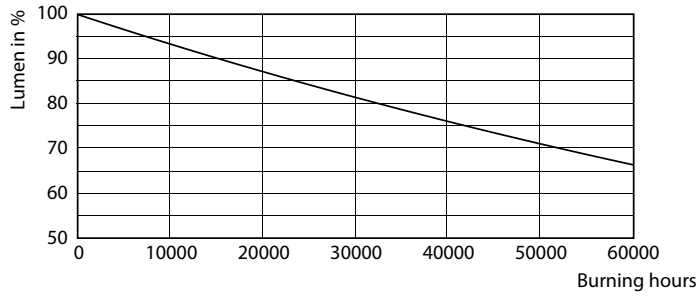


LEDtube PLC 13H 5.5W G24Q 827 15D ND



LEDtube PLC 13H 5W GX23-2 827 15D ND

Lifetime



Lumen Maintenance Diagram - 5.5PL-C/LED/13H/835/IF5/P/4P 20/1

