

InstantFit (UL Type-A) T5

14T5HE/46-850/IF21/G/DIM 10/1

CorePro, LEDtube, T5, 47-1/4 inch, 14 W, 5000 K, 2100 lm, 50000 hour(s)

CorePro, LEDtube, T5, 47-1/4 inch, 14 W, 5000 K, 2100 lm, 50000 hour(s), 150.00 lm/W, G5, Glass

Product data

General Information		Input Frequency	
Cap-Base	G5		40000-110000 Hz
Nominal lifetime	50,000 hour(s)	Power Consumption	14 W
Switching Cycle	50,000	Lamp Current (Max)	350 mA
Lighting Technology	LEDtube	Lamp Current (Min)	150 mA
Light Technical		Wattage Equivalent	28 W
Color Code	850 [CCT of 5000K]	Starting Time (Nom)	0.5 s
Beam Angle (Nom)	200 degree(s)	Warm-up time to 60% light	0.5 s
Luminous Flux	2,100 lm	Power Factor (Fraction)	0.9
Color Designation	Daylight	Voltage (Nom)	70-105 V
Correlated Color Temperature (Nom)	5000 K	UL Type	UL Type A
Luminous Efficacy (rated) (Nom)	150.00 lm/W	Temperature	
Color Consistency	<5	T-Case Maximum (Nom)	158 °F
Color rendering index (CRI)	82	Controls and Dimming	
LLMF At End Of Nominal Lifetime (Nom)	70 %	Dimmable	Yes
Operating and Electrical		Mechanical and Housing	
Line Frequency	40000-110000 Hz	Bulb Finish	Frosted

InstantFit (UL Type-A) T5

Bulb Material	Glass
Product Length	47-1/4 inch
Bulb Shape	T5
Net Weight (Piece)	0.322 lb

Approval and Application

Energy Saving Product	Yes
Approval Marks	UL certificate RoHS compliance DLC compliance
Energy Certifications	DLC Standard
EU RoHS compliant	Yes
Ambient temperature range	-4 °F to 113 °F

Application Conditions

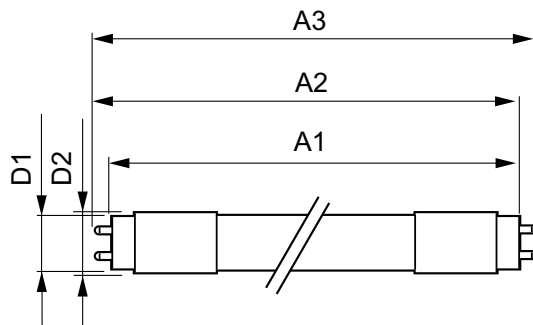
can it be used in closed luminaires	Yes
-------------------------------------	-----

Wireless Technology	Not applicable
---------------------	----------------

Product Data

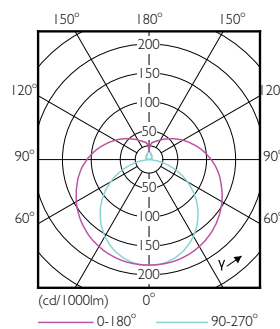
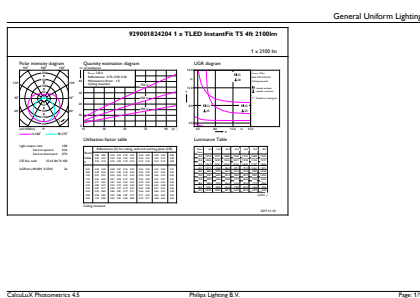
Order product name	14T5HE/46-850/IF21/G/DIM 10/1
Full product name	14T5HE/46-850/IF21/G/DIM 10/1
Order code	476523
Material Nr. (12NC)	929001824204
Numerator - Quantity Per Pack	1
EAN/UPC - Product/Case	046677476526
Numerator - Packs per outer box	10
EAN/UPC - Case	50046677476521

Dimensional drawing



Product	D1	D2	A1	A2	A3
14T5HE/46-850/IF21/G/DIM 10/1	5/8 inch	3/4 inch	45-3/16 inch	45-1/2 inch	45-3/4 inch

Photometric data

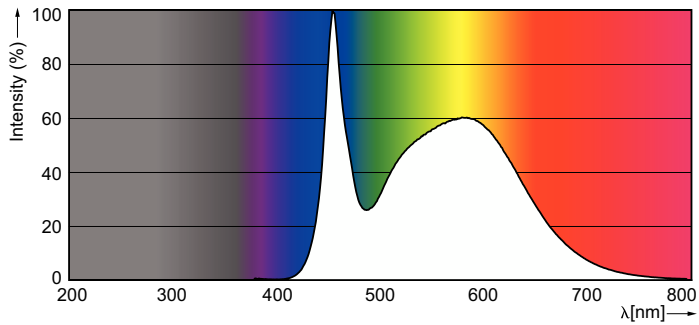


General uniform lighting - 14T5HE/46-850/IF21/G/DIM 10/1

Light Distribution Diagram - 14T5HE/46-850/IF21/G/DIM 10/1

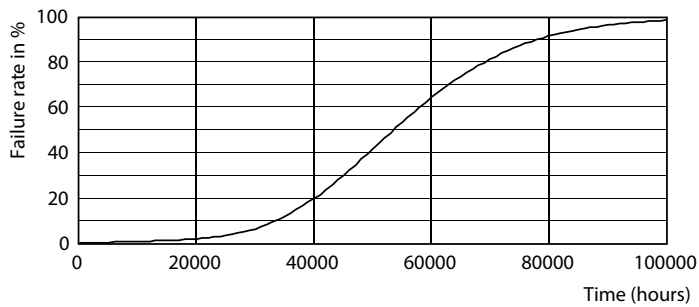
InstantFit (UL Type-A) T5

Photometric data

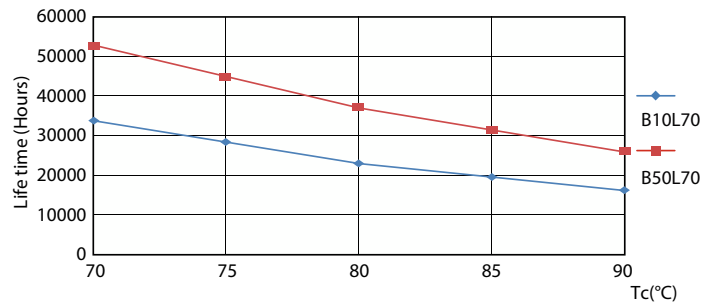


Spectral Power Distribution Colour - 14T5HE/46-850/IF21/G/DIM 10/1

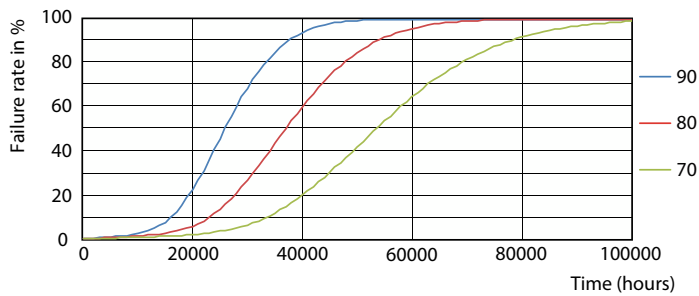
Lifetime



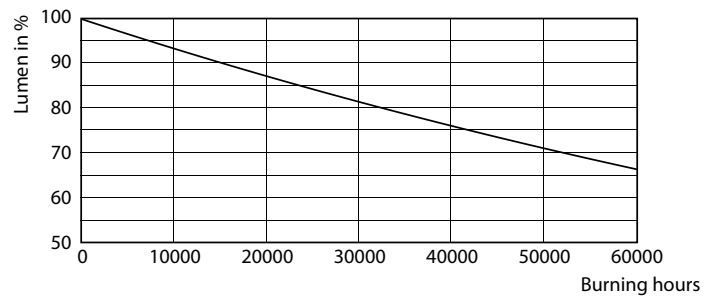
LEDtube 8-14W G5 830-850 200D DIM IF10-21



LEDtube 8-14W G5 830-850 200D DIM IF10-21



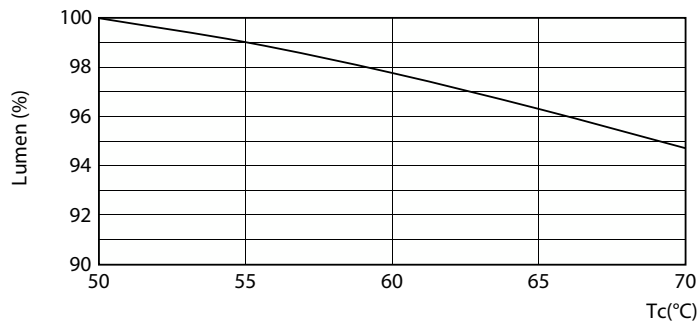
LEDtube 8-14W G5 830-850 200D DIM IF10-21



Lumen Maintenance Diagram - 14T5HE/46-850/IF21/G/DIM 10/1

InstantFit (UL Type-A) T5

Lifetime



Lumen Maintenance Diagram - 14T5HE/46-850/IF21/G/DIM 10/1

